



PRODUCT CATALOG NO.88

**SEALING SYSTEMS
FOR DOORS
AND WINDOWS**

Hinges

When Nothing Else Is Good Enough
For Long Enough



Cam Lift Hinge - Mortise Hinge



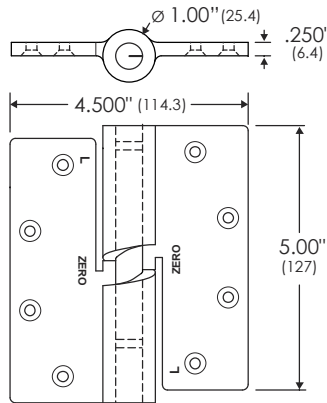
Note: SP = Steel Prime DB = Double Bearing
STST = Stainless Steel (Heavy Duty)

ZERO CAM LIFT MORTISE HINGES

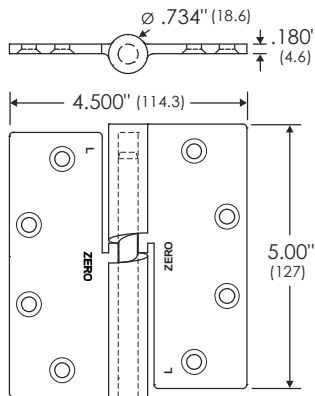
Mortise-Type Cam Hinges for use with EMI/RFI and sound-insulating doors utilizing acoustical seals. The cam action greatly improves the sealing characteristics along the door perimeter, lifting and lowering the door with the swing. The CAM LIFT Hinges are available for right or left-hand swinging doors. CAM LIFT Hinges will not bind door closures when doors are hung within accepted industry standards (Tested with LCN 4041 Series original). Finish: 630 (US32D). Sold in pairs.



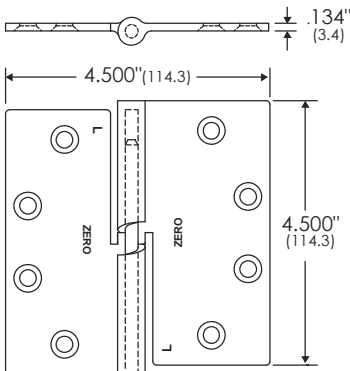
#Z950 L.H. Shown
#Z9500 (not shown)



#Z953 L.H. Shown



#Z955 L.H. Shown



Part #	Door Rating (1 1/2 pairs)	Screw Size (metal doors)	Lift (180° opening)
Z955	Up to 200 lbs.	12-24 x 3/4" UC	3/16"
Z953	Up to 300 lbs.	12-24 x 3/4"	1/4"
Z950	Up to 500 lbs.	12-24 x 3/4"	5/16"
Z9500	Up to 900 lbs.	5/16-18 x 3/4"	5/16"

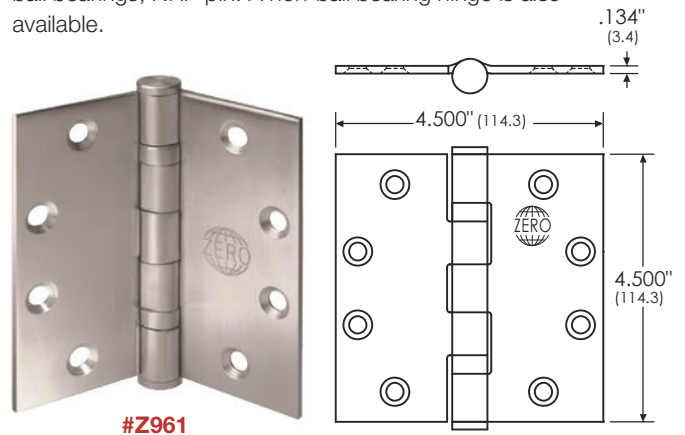


Z CAM LIFT HINGES SPECIFICATIONS

- HINGE:** 1020 Stainless Steel, precision investment cast.
- PIN:** Hardened tool steel. Hardened & chrome finished to Rockwell C 60 to meet ASME/ANSI B 18.3 specs.
- TYPE:** Mortise/ Handed - specify right or left hand.
- SPECS:** Minimum clearance at head of frame is 3/16". For doors greater than 1-3/4" clearance is 1/4".
- FINISH:** 630 (US32D)
- NOTE:** For Z950 and Z9500 screws must be engaged no less than .350" in ASTM A-36 steel reinforcement.

Full Mortise Hinge

Stainless Steel and Steel hinges. Five knuckle, two ball bearings, NRP pin. A non-ball bearing hinge is also available.



#Z961

Part #	Finish	Material	Size	Thickness
ZBB 960	630 (32D)	Stainless Steel	4.5"(114.3) x 4.5"(114.3)	.134"(3.4) Gauge
ZBB 961	626 (26D)	Steel Dull Chrome	4.5"(114.3) x 4.5"(114.3)	.134"(3.4) Gauge
ZBB 991	626 (26D)	Steel Dull Chrome	5.0"(127) x 4.5"(114.3)	.134"(3.4) Gauge
Z 961	600 (USP)	Steel Primed	4.5"(114.3) x 4.5"(114.3)	.134"(3.4) Gauge

Packed AWS & AMS - Boxed pair & half

Continuous Hinges

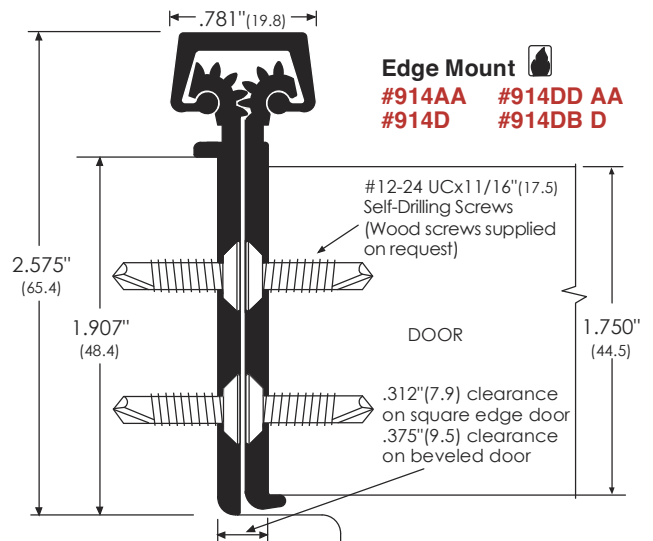
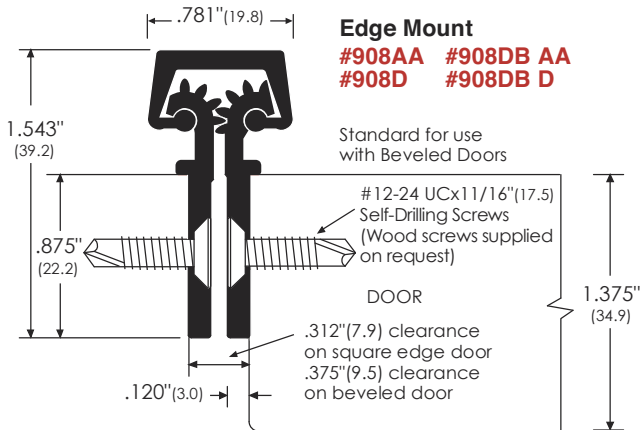
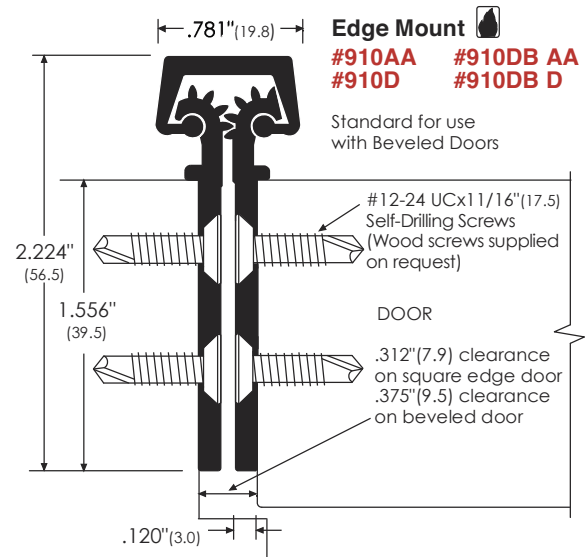
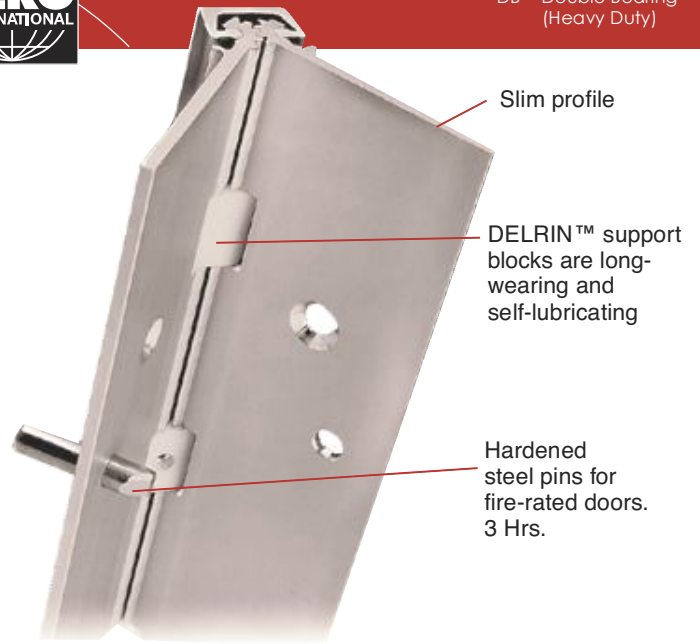


Note: AA = Clear Anodized D = Dark Bronze Anodized
DB = Double Bearing (Heavy Duty)

UNIGEAR HINGES

High-performance, heavy-duty, integrated door hinges that dissipate kick-back and impact shock while maintaining smooth, effortless door swing. Unlike conventional hinges, the UNIGEAR hinge spreads stress along the full length of the door and frame. Heavy-gauge aluminum alloy with solid support blocks of self-lubricating DELRIN™, UNIGEAR is perfect for new or retrofit construction. Options include "fire-rated," hospital tips (HT) and electrified pass-through hinges (EPT). The UNIGEAR is tamperproof and weather-resistant and is available for doors up to nine feet.

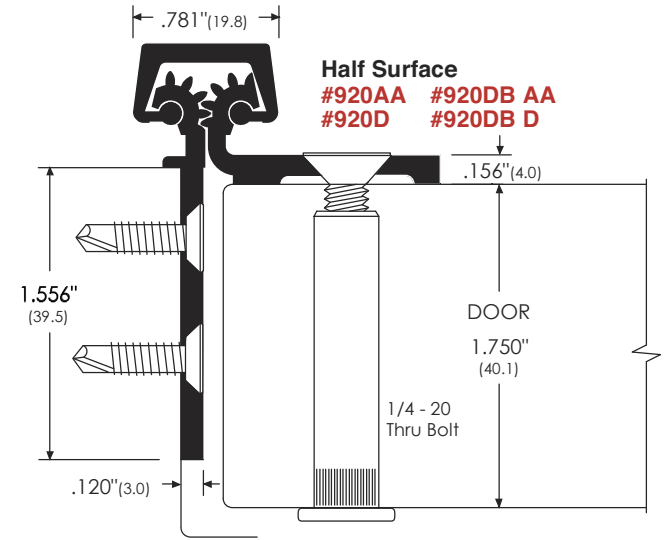
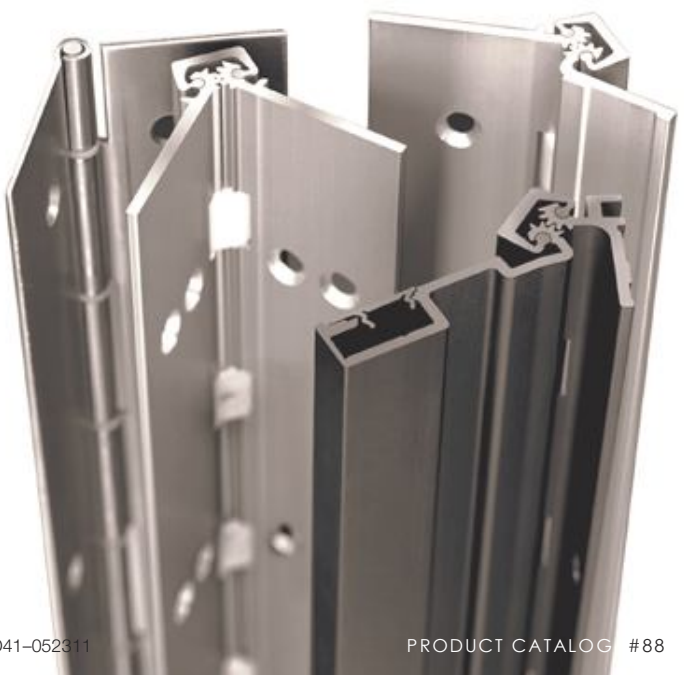
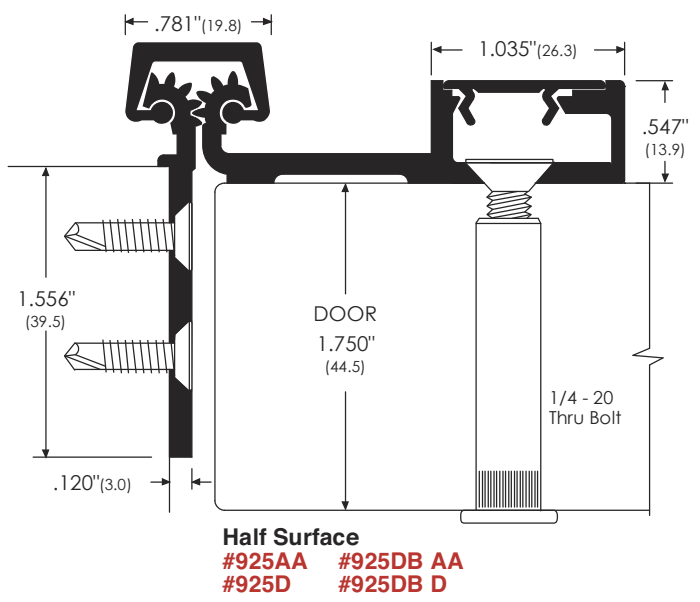
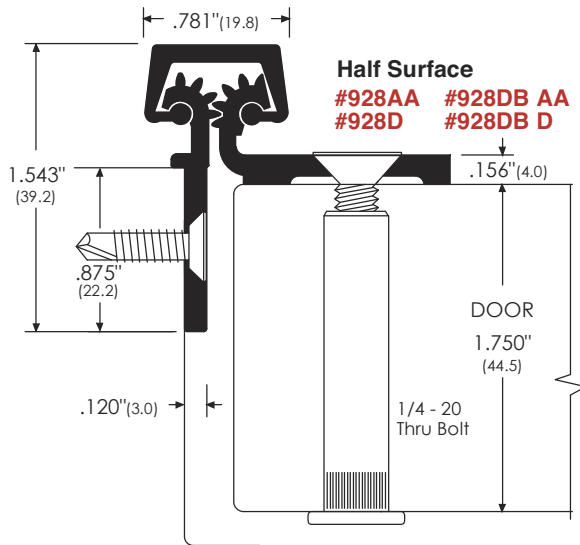
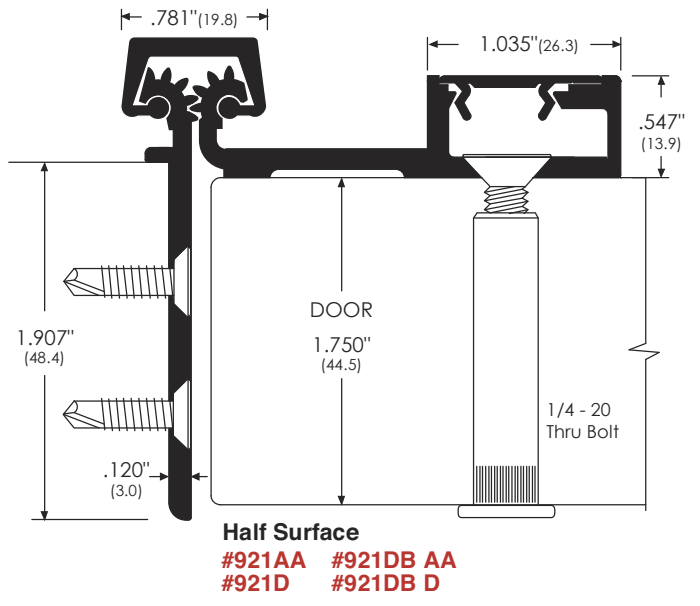
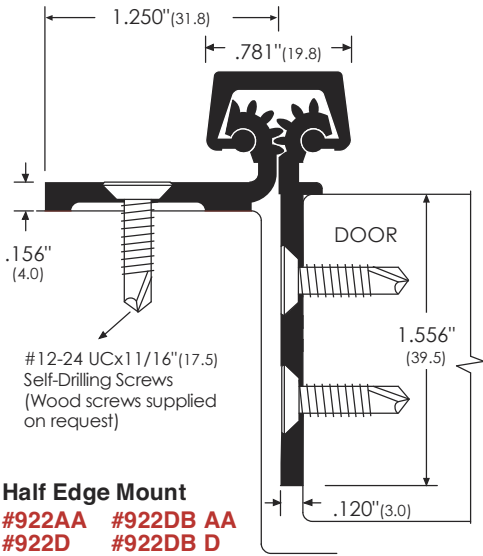
- All hinges are supplied with template screw holes on request.
- Custom lengths available on request.
- Door/ frame reinforcements are not required.



Continuous Hinges



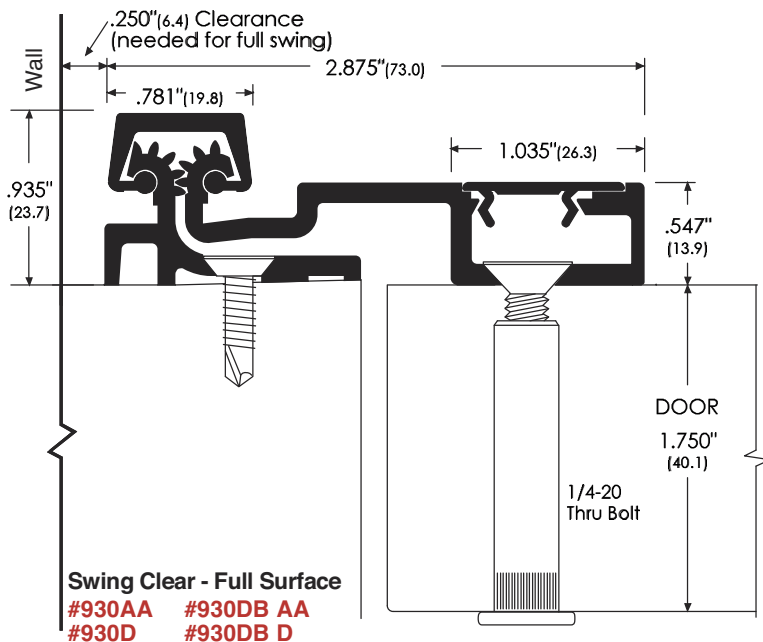
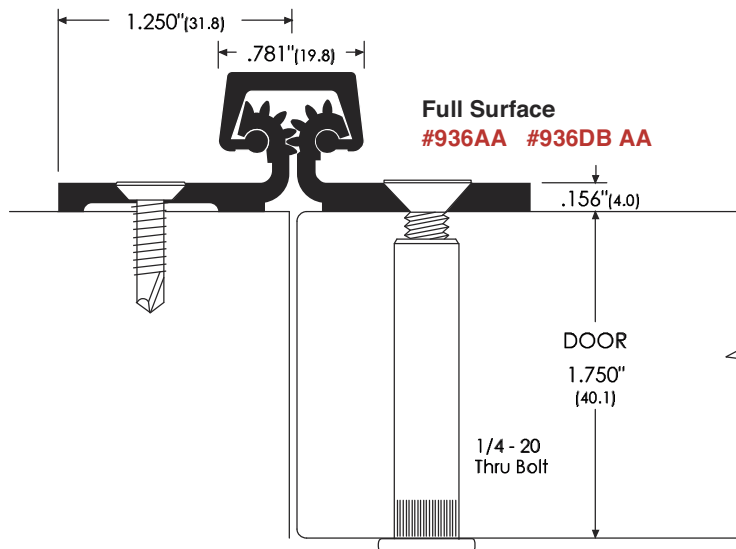
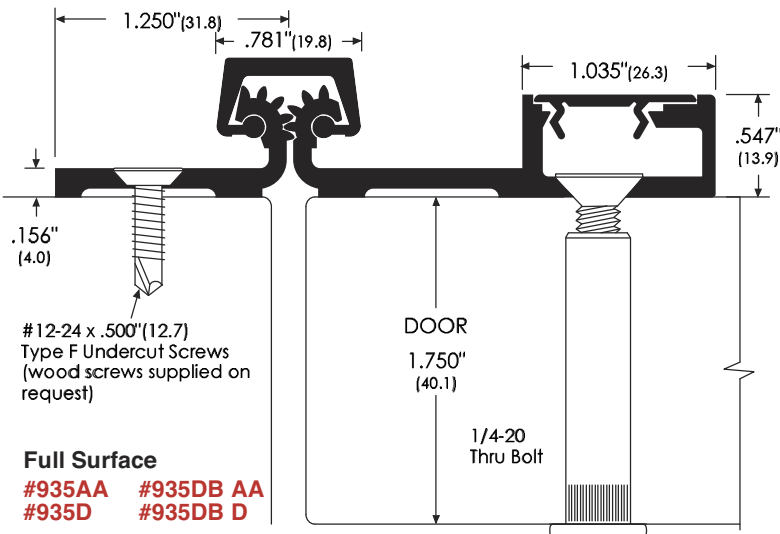
Note: AA = Clear Anodized DB = Dark Bronze Anodized
 DB = Double Bearing



Continuous Hinges



Note: AA = Clear Anodized
 D = Dark Bronze Anodized
 DB = Double Bearing (Heavy Duty)
 SP = Steel Prime
 STST = Stainless Steel



Options:



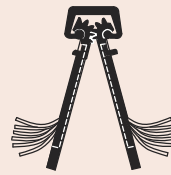
HT - Hospital Tip

Angle-cut hinge preparation to make doorways safer.



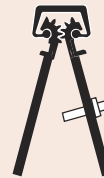
SC - School Option

The UNIGEAR can be specified with a non-removable cap at the hinge top to guard against foreign material being dropped in.



CE (Concealed Electric) - UNIGEAR Hinge Formerly #912

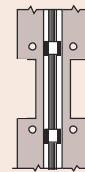
Electrified Feature enables hook-up of alarms, buzzers and locks. 26 gauge wires. (typical 6)



#911 Fire-Rated UNIGEAR Hinge

Multi-point, hardened steel pins for an added measure of security. For 3 hr. doors, 108" or less.

3hrs.



EPT (Electric Power Transfer) - UNIGEAR Hinge #910

Cut out to accommodate Von Duprin (or equivalent) power transfer unit. Specify hand opening when ordering.

Note :

UNIGEAR Continuous Hinges are available with the "standard" number of bearings, and with double the number "DB" of bearings per length. DB hinges are recommended for heavy-duty or high-traffic doors. Available in any length.

Regular-duty hinges are used on standard-use doors and doors up to 220 lbs.

Double-bearing (DB) hinges are used on medium or high-use doors and doors upto 475 lbs. (Consult manufacturer for proper sizing of door width and weight.)

Template hole pattern allows for advance door and frame preparation.

Standard	"DB" (Double Bearing)
83" - 16 bearings	83" - 32 bearings
95" - 18 bearings	95" - 36 bearings
107" - 21 bearings	107" - 42 bearings

Tests:

Dynamic and static load test for compliance with ANSI A156.1(BHMA 101) for 350,000 cycles at 15 cycles per minutes.

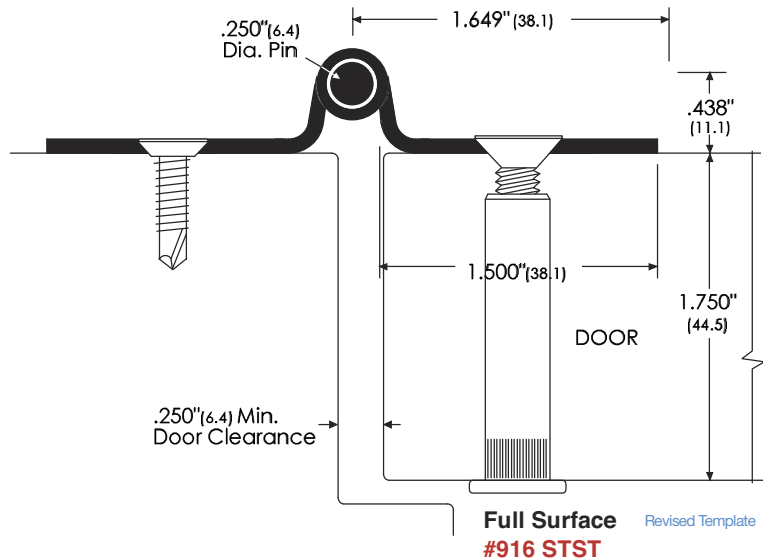
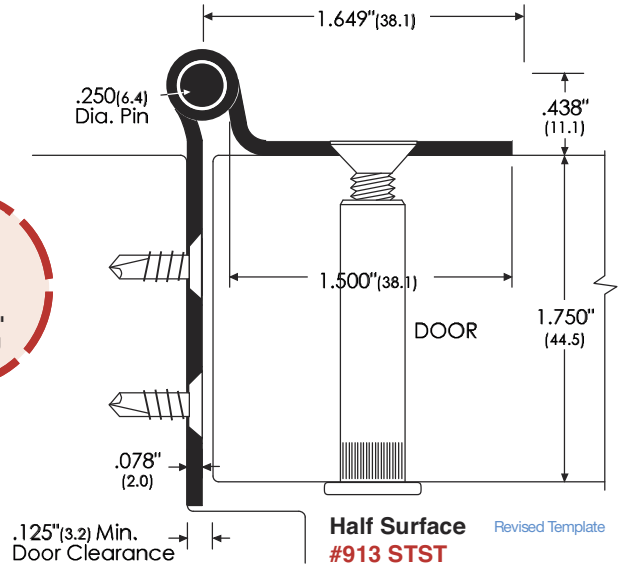
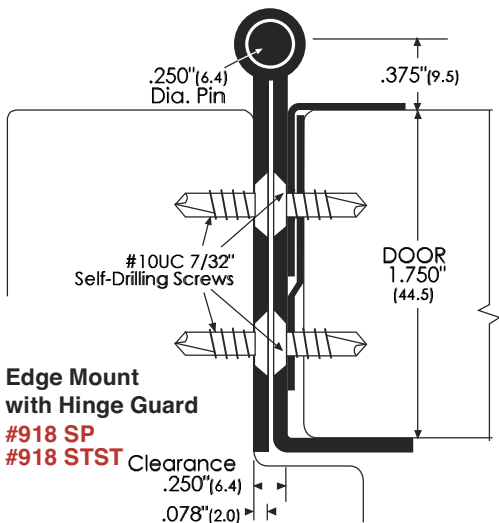
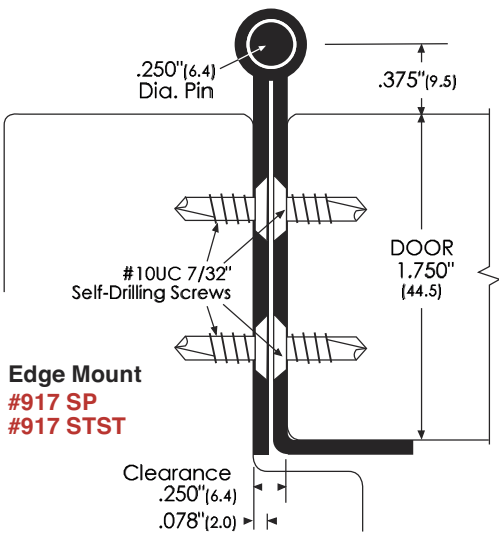
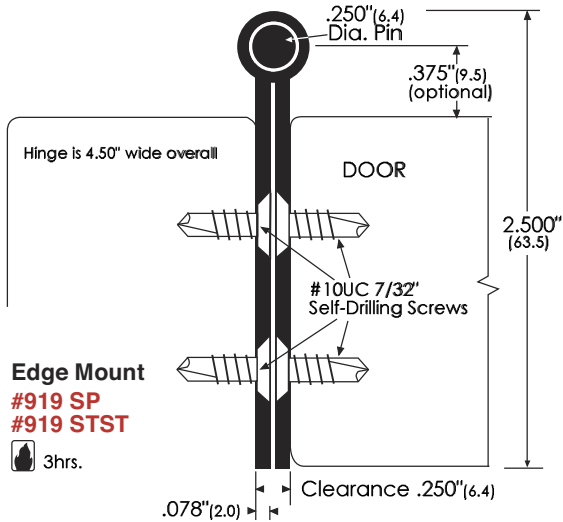
	RESULTS	ALLOWED
Dynamic load lateral	0.007	0.062
Dynamic load vertical	0.028	0.105
Static load lateral	0.015	0.062
Static residual lateral	0.000	0.062

All hinges meets this requirement.

All UNIGEAR and UNIPIN Hinges are supplied with #12-24x11/16" Type F screws (self-cutting thread).

UNIPIN (Barrel-Type Hinge)

Heavy-duty continuous hinge for high-traffic wood or metal doors, 304-type stainless steel, has nylon washers with 2.00" knuckle lengths and .250" diameter stainless steel pin which runs parallel to length of hinge. Door frame reinforcements are not required.



FIRE RATING FOR HINGES

FIRE RATINGS
 (910, 919 Type) Tested under ASTM 152, UL10B, for up to 3 hours.
 (914 Type) Tested under UBC7-2, NFPA 25-2, UL10B for up to 45 min.

- 20 Minutes:** - Steel doors & steel frames in drywall or masonry.
- Wood doors & steel frames in drywall or masonry.
- 45 Minutes:** - Steel doors & steel frames in drywall or masonry.
- Wood doors & steel frames in drywall or masonry.
- 60 Minutes:** - Steel doors & steel frames in drywall or masonry.
- Wood doors & steel frames in drywall or masonry.
- 90 Minutes:** - Steel doors & steel frames in drywall or masonry.
- Wood doors & steel frames in drywall or masonry.
- Limitations:** - Minimum 16 gauge steel for 90-minute rating.
- Maximum opening for single door - 4'0" x 8'0"
- Maximum opening for pair of doors - 8'0" x 8'0"

FIRE RATINGS (911 Type with multi-point pin)
3 Hours: - Steel doors & steel frames in masonry.
- Minimum 16 gauge steel frames and doors.
Limitations: - Maximum opening for single door - 3'0" x 9'0"