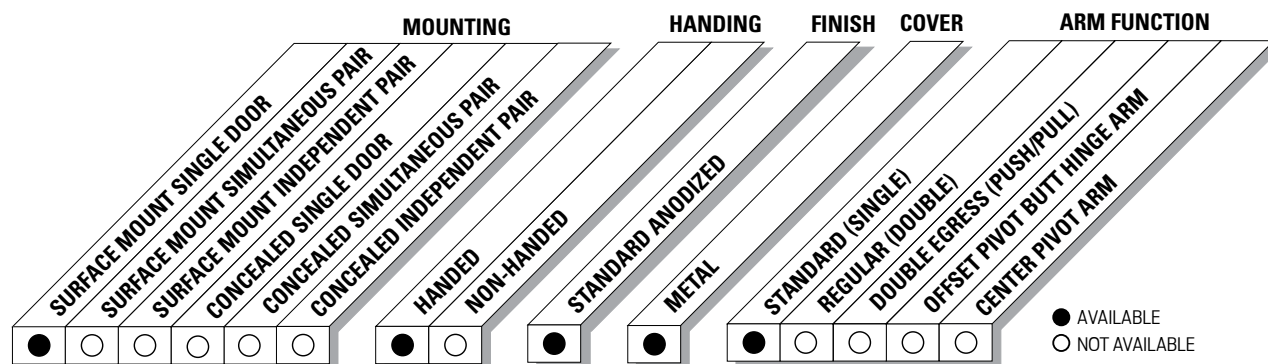


The 9530 SENIOR SWING by LCN is an ADA door operator that is a two-in-one swing door operator. SENIOR SWING operators when activated, opens doors automatically for wheelchair access, yet allows for manual operation for regular pedestrian traffic.

<b>Certifications</b>	Grade 1 - ANSI A156.19, UL325/228, UL1998, ADA, 100 Hour Salt Spray, Meets BAA - Buy American Act	<b>Fasteners</b>	Machine screw pack
<b>Fluid</b>	All Weather Fluid	<b>Mounting</b>	Single door, surface mount, offset pivot. butt hinge, pull side
<b>Handing</b>	Handed	<b>Arms</b>	Standard arm (3077T)
<b>Door Width</b>	<ul style="list-style-type: none"> <li>■ Minimum 33" - 48"</li> <li>■ Single door - width per leaf 33" minimum, 48" maximum</li> </ul>	<b>Finishes/Colors/ Powder Coat</b>	<ul style="list-style-type: none"> <li>■ Anodized Aluminum</li> <li>■ Anodized Dark Bronze</li> </ul>
<b>Warranty</b>	2 years		

**Special  
Templates**

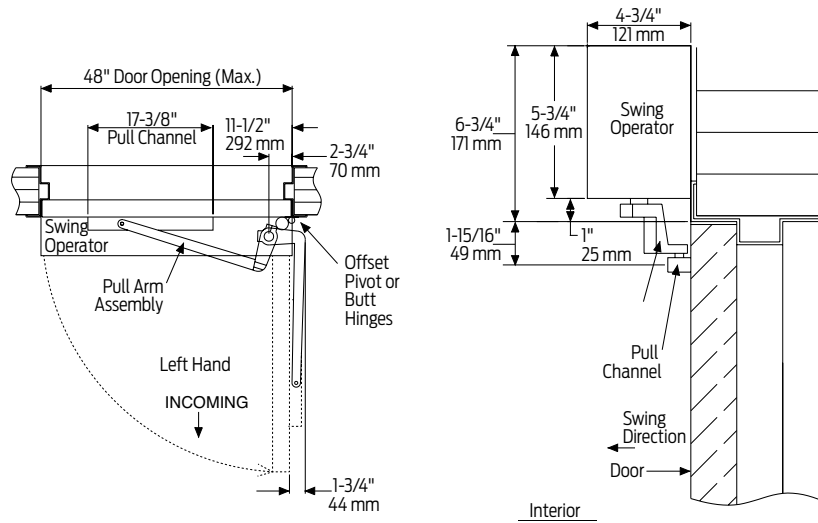
Customized installation templates or products may be available to solve unusual applications. Contact LCN Product Support for assistance.



# 9530 Series Senior Swing

## Mounting details

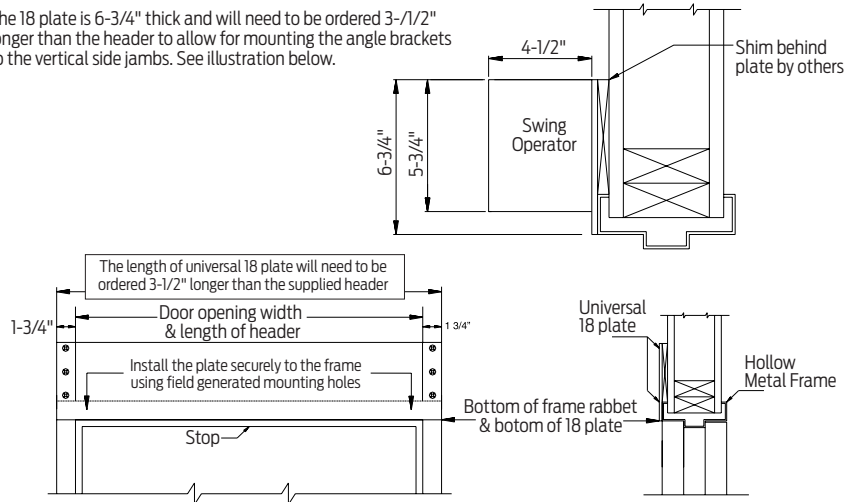
### Top Jamb Single Door Mounting



### Offset pivot/butt hinge, center pivot, pull

NOTE: Cannot be used with swing clear hinges, pocket pivots or balanced doors.

The 18 plate is 6-3/4" thick and will need to be ordered 3-1/2" longer than the header to allow for mounting the angle brackets to the vertical side jambs. See illustration below.



### Hollow metal frame Suggested Installation.

<b>Butt Hinges</b>	Should not exceed 5" (127 mm) in width
<b>Reveal</b>	Should not exceed 4" (102 mm)
<b>Head Frame</b>	Minimum 1-3/4" (44 mm). Face frame 6-3/4" (171 mm) total operator clearance
<b>Top Rail</b>	Minimum 2-3/4" (70 mm)
<b>Opening and Closing Time</b>	<ul style="list-style-type: none"> <li>Variable by adjustments to the electronic control box</li> <li>Maximum hold open time adjustable up to approximately 32 seconds</li> </ul>
<b>System Diagram</b>	See "AUTOMATIC OPERATORS" section page 51 for typical system wiring and page 53 for electrical data
<b>Maximum Opening</b>	Template allows 90 degree power opening and 90 degree manual opening

#### Notes:

- Push N' Go permits non-switch activation with a power boost providing additional latching force
- Electromechanical unit with microprocessor control
- Digital keypad for easy setup
- 36" header length is standard. Specify 33" - 48" max
- Double door header available up to 98", specify other length 49" - 98" max
- Consult factory regarding this option
- Adjustable hold open period of 2 - 32 seconds in automatic or manual mode
- Actuators available separately, see pages 115-131

**Motor Gearbox**



**9530-3454  
Motor Gearbox**

- Senior swing
- Handed
- Driving mechanism for operator
- Provides maximum 15 lbs opening force

**Mount Brackets**



**9530-275  
Mounting Bracket**

- Motor gearbox mounting bracket for 2-3/4" offset pivot or butt hinge installations
- Front bracket



**9530-3018  
Rear Mounting Bracket**

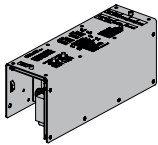
- Motor gearbox mounting bracket
- Rear bracket



**9530-334-1  
Angled Bracket**

- Mounting bracket for surface applications (includes 2 mounting brackets)

**Control Box**



**9530-3462  
Control Box**

- Electronic controlling device for Senior Swing

**Headers**



**9530-3572HL  
Header**

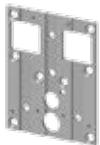
- Standard
- Single door, single operator
- Specify length 33" to 48" maximum



**9530-3572DD  
Header**

- Standard
- Double door, single operator
- Specify length 49" to 98" maximum

**End Caps**



**9530-334  
Header End Caps**

- With openings for wiring



**9530-334-2  
End Dress Plate**

- Metal finish end cap

## Arms



**9530-3077PLCM**  
Standard Arm Assembly

- Handed
- Track roller included (includes 3038, 3077T, 3034 & 73)



**9530-3077T**  
Standard Arm

- Handed
- Track roller not included

## Tracks



**9530-3038**  
Track

- Non-handed
- Includes 3034 & 73



**9530-73**  
Track End Cap

- Black plastic end caps



**9530-3034**  
Roller

- Quiet low friction roller assembly

## Installation Assembly



**9530-11A**  
Spindle Plate

- Hides bottom of motor gearbox
- Completes header box
- Cutout allows for motor gearbox shaft
- For 2-3/4" offset pivot or butt hinge installations



**9530-12**  
Filler

- Plate blank
- Completes length of header box (specify Length)



**9530-18**  
Mounting Plate

- Optional mounting plate for standard hollow metal door frames
- Specify length 36-1/2" to 101-1/2" maximum, when angle brackets
- Specify length 33" to 98" maximum when using end dress plates

*NOTE: The length of a universal 18 plate will need to be ordered 3-1/2" longer than the supplied header when using angle brackets*

**How-to-order 9530 Series closers**

**Specify hand**

- RH
- LH

**Specify header/length**

- HL\_\_ (Specify length 33" to 48")
- DD\_\_ (Specify length 49" to 98")

**Specify finish**

- Standard Anodized Finish \_\_\_\_\_  
Aluminum or Dark Bronze

**Operator will be shipped with:**

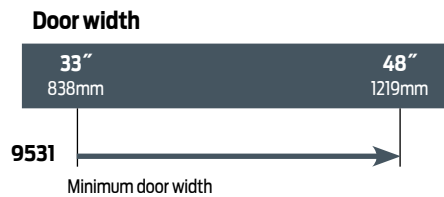
- Standard motor gearbox
  - Standard control box
  - Header (at specified length, 36" standard)
  - Standard arm (3077T)
  - 2-3/4" pivot point
  - Standard track w/track roller
  - Machine screw pack
- unless options listed below are selected

**Operator options**

**Mounting plate**

- Plate, \_\_\_ (Specify Length 33" to 101-1/2")

**Table of sizes**



Indicates recommended range of door width for operator.

*NOTE: For all Senior Swing Series.  
Single Door - Width per leaf 33" minimum, 48" maximum.*