

# Door stops, holders and silencers

With a full line of wall bumpers, wall holders, kick down holders and hinge pin stops for commercial and residential applications, Ives products are designed to ensure that doors will not slam into the wall. These accessories provide an economical alternative for doors without a closer and overhead stop or holder.



## Door stops, holders and silencers

### Floor stops and holders

# FS13

#### Dome stop

- Standard FS13 for use where no threshold is used
- Heavy-duty cast dome stops constructed of brass
- Unique riser design of R14 (below) allows easy conversion to threshold application
- Units are packed with fasteners sufficient for mounting in all types of floor construction, including concrete
- Replaceable - grey rubber bumper

#### Specifications

Material substrate	Made from cast brass
Certifications	Meets ANSI/BHMA A156.16, L12141

#### Dimensions

Overall height	Base height	Base diameter
1"	$\frac{3}{16}$ "	1 $\frac{3}{4}$ " x 2" oval

#### Available accessories

- Security pin screws
- Grey rubber bumper



# R13

#### Dome stop rise

- Adapts the FS13 Dome stop to threshold use

#### Specifications

Material substrate	Made from cast brass
--------------------	----------------------

#### Dimensions

Riser height	Base diameter
$\frac{5}{16}$ "	1 $\frac{3}{4}$ " round



# FS17

#### Dome stop

- One piece dome stop for use with thresholds
- Heavy-duty cast dome stops constructed of brass
- Units are packed with fasteners sufficient for mounting in all types of floor construction, including concrete
- Grey rubber bumper

#### Specifications

Material substrate	Made from cast brass
Certifications	Meets ANSI/BHMA A156.16, L12161

#### Dimensions

Overall height	Base height	Base diameter
1 $\frac{11}{32}$ "	$\frac{1}{2}$ "	1 $\frac{3}{4}$ " round

#### Available accessories

- Security pin screws
- Grey rubber bumper



#### FS13, R14 and FS17 Finishes

BHMA	Description	Substrate	Finish
605	Bright Brass	Brass	US3
606	Satin Brass	Brass	US4
612	Satin Bronze	Brass	US10
613	Oil Rubbed Bronze	Brass	US10B
625	Bright Chrome	Brass	US26
626	Satin Chrome	Brass	US26D

For other colors, consult factory.

# FS436 / FS438

## Dome stop

- FS436 for doors without threshold
- FS438 for doors with threshold or undercut doors
- Heavy-duty cast dome stops
- Packed with fasteners for light duty masonry and wood applications
- Grey rubber bumper

## Specifications

Material substrate	Made from cast brass or aluminum
Certifications	<ul style="list-style-type: none"> <li>▪ FS436 Meets ANSI/BHMA A156.16, L12141 for brass and L32141 for aluminum</li> <li>▪ FS438 Meets ANSI/BHMA A156.16, L12161 for brass and L32161 for aluminum</li> </ul>

## Dimensions - FS436

Overall height	Base height	Base diameter
1"	$\frac{3}{16}$ "	1 $\frac{3}{4}$ "x 2" oval

## Dimensions - FS438

Overall height	Base height	Base diameter
1 $\frac{3}{8}$ "	$\frac{9}{16}$ "	1 $\frac{3}{4}$ "x 2" oval

## Finishes - brass

BHMA	Description	Substrate	Finish
605	Bright Brass	Brass	US3
606	Satin Brass	Brass	US4
609	Blackened Brass	Brass	US5
612	Satin Bronze	Brass	US10
613	Oil Rubbed Bronze	Brass	US10B
619	Satin Nickel	Brass	US15
622	Matte Black	Brass	BLK
625	Bright Chrome	Brass	US26
626	Satin Chrome	Brass	US26D
—	Aged Bronze	Brass	643e/716

## Finishes - aluminum

BHMA	Description	Substrate	Finish
628	Satin Aluminum	Aluminum	US28

For other colors, consult factory.



FS436



FS438

# R435 / 438

## Dome stop riser

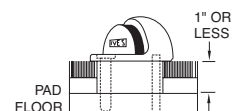
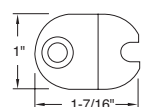
- R435 for conversion of FS436 Dome stop to carpet installation
- R437 For conversion of FS438 Dome stop to carpet installation
- Packed with fasteners for heavy duty masonry and wood applications

## Specifications

Material substrate	Made from aluminum, mill finish
--------------------	---------------------------------

## Dimensions

Base diameter	Heights available
1"x 1 $\frac{7}{16}$ " oval	$\frac{1}{4}$ ", $\frac{3}{8}$ ", $\frac{1}{2}$ " $\frac{5}{8}$ ", $\frac{3}{4}$ " and 1" heights



## Door stops, holders and silencers

## Floor stops and holders

## FS439

## Universal dome floor stop

- High or low-rise mount
- Spring-loaded rubber contact
- Packed with fasteners for light duty masonry and wood applications
- Grey rubber bumper

## Specifications

Material substrate	Made from cast zinc or stainless steel
Certifications	Meets ANSI/BHMA A156.16

## Dimensions

Overall height	Pad height	Base height	Base diameter
1 1/2"	1 1/8"	1/4"	1 7/8"

## Finishes - zinc

BHMA	Description	Substrate	Finish
676	Matte Black	Zinc	BLK
677	Bright Brass	Zinc	US3
678	Satin Brass	Zinc	US4
704	Oil Rubbed Bronze	Zinc	US10B
–	Satin Nickel	Zinc	US15
681	Bright Chrome	Zinc	US26
682	Satin Chrome	Zinc	US26D
–	Aged Bronze	Zinc	643e/716

## Finishes - stainless steel

BHMA	Description	Substrate	Finish
630	Satin Stainless	Stainless steel	US32D

For other colors, consult factory.



## FS410

## Decorative floor stop

- Non-directional
- Packed with fasteners for light duty masonry and wood applications.
- Black rubber ring

## Specifications

Material substrate	Made from cast brass
Certifications	Meets ANSI/BHMA A156.16

## Dimensions

Overall height	Base height	Base diameter
1 1/2"	1/4"	1 1/4"

## Finishes - zinc

BHMA	Description	Substrate	Finish
605	Bright Brass	Brass	US3
619	Satin Nickel	Brass	US15
622	Matte Black	Brass	BLK
625	Bright Chrome	Brass	US26
626	Satin Chrome	Brass	US26D
–	Aged Bronze	Brass	643e/716





# FS18S / FS18L

## Floor stop

- FS18S - 1 1/2", FS18L - 3 1/2"
- Security door stops designed for use in high vandalism areas
- Molded from black flame resistant, resilient material around a heavy-duty stud
- Once grouted in concrete, leaves no exposed fasteners to be tampered with or removed
- Ideal for jail or security cell areas where floor mounted stops are required
- FS18L also ideal for concrete wall applications

## Specifications

Material substrate	Made from rubber
--------------------	------------------

## Finishes

- Black rubber

FS18S

FS18L

## Dimensions - FS18S

Height	Diameter	Stud length
1 1/2"	2"	2 1/2"

## Dimensions - FS18L

Height	Diameter	Stud length
3 1/2"	2"	2 1/2"



# FS434

## Floor stop

- For undercut doors up to 1 1/2"
- Packed with fasteners for light duty masonry and wood applications
- Soft, resilient black rubber

## Specifications

Material substrate	Made from wrought steel
--------------------	-------------------------

## Finishes

BHMA	Description	Substrate	Finish
604	Zinc Plated	Steel	US2C

## Dimensions

Overall height	Base size
2 5/8"	1 1/2" W x 2 3/4" L



## Available accessories

- Replaceable soft, resilient black rubber

# 430

## Floor door stop

- For undercut doors up to 1 1/2"
- Welded wood screws for wood applications
- White rubber tip

## Specifications

Material substrate	Made from cast brass and aluminum
--------------------	-----------------------------------

## Dimensions

Overall height	Base size
2 5/8"	1 1/2" W x 2 3/4" L

## Finishes - brass

BHMA	Description	Substrate	Finish
605	Bright Brass	Brass	US3
606	Satin Brass	Brass	US4
609	Blackened Brass	Brass	US5
613	Oil Rubbed Bronze	Brass	US10B
619	Satin Nickel	Brass	US15
625	Bright Chrome	Brass	US26
626	Satin Chrome	Brass	US26D

## Finishes - aluminum

BHMA	Description	Substrate	Finish
666	Bright Brass	Aluminum	A3
-	Blackened Brass	Aluminum	A5
669	Bright Nickel	Aluminum	A14
673	Aluminum Clear Coat	Aluminum	A92

For other colors, consult factory.

## Available accessories

- Replaceable white or black rubber tips



## Door stops, holders and silencers

### Floor stops and holders

# FS441

#### Floor stop

- Accommodates door undercut up to 1 1/2"
- Designed to blend well with all types of construction and provide a minimum of hindrance to cleaning efforts
- Grey non-marring rubber bumper
- Packed with fasteners for heavy duty masonry and wood applications

#### Specifications

Material substrate	Made from cast brass
Certifications	Meets ANSI/BHMA A156.16, L12131

#### Dimensions

Overall height	Overall length	Base depth
2 1/8"	2 7/8"	1 5/8"



#### Finishes - zinc

BHMA	Description	Substrate	Finish
605	Bright Brass	Brass	US3
606	Satin Brass	Brass	US4
609	Blackened Brass	Brass	US5
612	Satin Bronze	Brass	US10
613	Oil Rubbed Bronze	Brass	US10B
619	Satin Nickel	Brass	US15
622	Matte Black	Brass	BLK
625	Bright Chrome	Brass	US26
626	Satin Chrome	Brass	US26D
—	Aged Bronze	Brass	643e/716

For other colors, consult factory.

#### Available accessories

- Replaceable grey non-marring rubber bumper

# FS444

#### Masonry and drywall/wood floor stops

- Ideal for interior or exterior use
- Accommodates door undercut up to 2 1/2"
- Replaceable black non-marring rubber tip
- FS444 is packed with fasteners for heavy duty masonry applications
- FS448 is packed with fasteners for drywall/wood applications

#### Specifications

Material substrate	Made from cast brass and aluminum
Certifications	<ul style="list-style-type: none"> <li>▪ FS444 Meets ANSI/BHMA 156.16, L12131 for brass</li> <li>▪ FS448 Meets ANSI/BHMA 156.16, L12121 for brass and L32121 for aluminum</li> </ul>

#### Dimensions

Overall height	Base diameter
1"	1 3/4" x 2" oval

#### Finishes - brass

BHMA	Description	Substrate	Finish
605	Bright Brass	Brass	US3
606	Satin Brass	Brass	US4
609*	Blackened Brass	Brass	US5
612	Satin Bronze	Brass	US10
613	Oil Rubbed Bronze	Brass	US10B
619	Satin Nickel	Brass	US15
622	Matte Black	Brass	BLK
625	Bright Chrome	Brass	US26
626	Satin Chrome	Brass	US26D
—	Aged Bronze	Brass	643e/716

#### Finishes - aluminum

BHMA	Description	Substrate	Finish
628*	Satin Aluminum	Aluminum	US28

\*Not available on FS444. For other colors, consult factory.

#### Available accessories

- Replaceable grey non-marring rubber bumper



FS444

## Door stops, holders and silencers

### Floor stops and holders

# FS9

#### Floor stop and semi-automatic holder

- Semi-automatic floor-mounted holders accommodates with door to floor clearance of 1 1/2" or less
- Activate holder by flipping the engagement tongue forward. When door is opened, the hook (mounted on door) engages the tongue (to release, push firmly on door to disengage tongue)
- Packed with fasteners for extra-heavy duty masonry and wood applications



#### Specifications

Material substrate	Made from cast brass
Certifications	Meets ANSI/BHMA A156.16, L11241

#### Dimensions

Overall height	Base dimensions
3 1/2"	2" W x 3 1/2" L

#### Finishes - brass

BHMA	Description	Substrate	Finish
605	Bright Brass	Brass	US3
606	Satin Brass	Brass	US4
612	Satin Bronze	Brass	US10
613	Oil Rubbed Bronze	Brass	US10B
625	Bright Chrome	Brass	US26
626	Satin Chrome	Brass	US26D

For other colors, consult factory.

#### Available accessories

- Security pin screws
- Replaceable hook package

# FS40, FS41, FS42 and FS43

#### Floor stop and automatic holders

- Automatic door holders ideal for heavy-traffic situations that require a simple, fool-proof, Hold-open device
- Unit is activated automatically when door is opened. A firm pull on door releases the mechanism
- Strikes accommodate different door to floor clearances
- Model numbers are determined by strike/door-to-floor clearances
- Holder position on door is adjustable
- Packed with fasteners for heavy duty masonry and wood applications



#### Specifications

Material substrate	Made from forged brass
Certifications	Meets ANSI/BHMA A156.16, L11301

#### Dimensions

Door to floor clearance	Holder dimensions
<ul style="list-style-type: none"><li>▪ FS40 1/2" or less</li><li>▪ FS41 9/16" to 1 1/16"</li></ul>	<ul style="list-style-type: none"><li>▪ FS42 1 1/8" to 1 9/16"</li><li>▪ FS43 1 5/8" to 2 1/16"</li></ul>

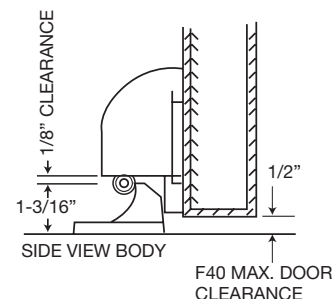
#### Finishes

BHMA	Description	Substrate	Finish
605	Bright Brass	Brass	US3
606	Satin Brass	Brass	US4
612	Satin Bronze	Brass	US10
613	Oil Rubbed Bronze	Brass	US10B
625	Bright Chrome	Brass	US26
626	Satin Chrome	Brass	US26D

For other colors, consult factory.

#### Available accessories

- Strike packages



## Door stops, holders and silencers

## Floor stops and holders

## FS446 / FS450

## Floor stop and manual door holder

- Manual type floor holder ideal for interior or exterior use
- Accommodates door undercut up to 2 1/2"
- Replaceable black non-marring rubber tip
- Unit functions as a stop but serves as a hold-open device when hook is manually engaged in strike. Unit requires manual disengagement to release hold-open
- FS446 is packed with fasteners for heavy duty masonry applications
- FS450 is packed with fasteners for drywall/wood applications



FS446

## Specifications

Material substrate	Made from cast brass and aluminum
Certifications	<ul style="list-style-type: none"> <li>FS446 Meets ANSI/BHMA 156.16, L11371 for brass and L31371 for aluminum</li> <li>FS450 Meets ANSI/BHMA 156.16, L11361 for brass and L31361 for aluminum</li> </ul>

## Dimensions

Overall height	Height from floor to stop center line	Stop diameter	Base diameter
3 3/4"	2 5/8"	1 1/16"	2 1/12"

## Finishes - brass

BHMA	Description	Substrate	Finish
605	Bright Brass	Brass	US3
606	Satin Brass	Brass	US4
612	Satin Bronze	Brass	US10
613	Oil Rubbed Bronze	Brass	US10B
619	Satin Nickel	Brass	US15
622	Matte Black	Brass	BLK
625	Bright Chrome	Brass	US26
626	Satin Chrome	Brass	US26D
—	Aged Bronze	Brass	643e/716

## Finishes - aluminum

BHMA	Description	Substrate	Finish
628	Satin Aluminum	Aluminum	US28

For other colors, consult factory.

## Available accessories

- Replaceable black non-marring rubber bumper

## FS495 / FS496 / FS497

## Stops and semi-automatic holders

- FS495 wall stop, FS496 floor stop - 3/8" max clearance, FS497 floor stop - 1" max clearance (all with automatic holders)
- Automatic door holders ideal for heavy-traffic situations that require a simple, hold-open device
- Recommended installation is holder on door and strike on wall
- Holder position on door is adjustable
- Holder is tapered to prevent "child riding"
- Packed with fasteners for heavy duty masonry and drywall/wood applications



FS495

## Specifications

Material substrate	Made from cast brass
Certifications	<ul style="list-style-type: none"> <li>FS495 Meets ANSI/BHMA 156.16, L11291 for brass</li> <li>FS496 Meets ANSI/BHMA 156.16, L11301 for brass</li> <li>FS497 Meets ANSI/BHMA 156.16, L11301 for brass</li> </ul>

## Dimensions

- FS495 Holds door 3 3/4" from wall
- FS496 Door to floor clearances 3/8" max
- FS497 Door to floor clearances 1" max

## Finishes

BHMA	Description	Substrate	Finish
605	Bright brass	Brass	US3
606*	Satin brass	Brass	US4
612	Satin bronze	Brass	US10
613	Oil rubbed bronze	Brass	US10B
625	Bright chrome	Brass	US26
626	Satin chrome	Brass	US26D

\*Not available on FS496 and FS497. For other colors, consult factory.



# WS401, WS402CVX / WS401, WS402CCV

## Wall bumpers (convex and concave models)

- Constructed in heavy-duty cast brass
- Special retainer ring makes rubber tamper resistant
- Grey rubber bumper
- WS401/402CVX – convex rubber bumper, packed with fasteners for drywall/wood applications
- WS401/402CCV – concave rubber bumper which avoids damage to locks with projecting buttons, packed with fasteners for drywall/wood applications

## Specifications

Material substrate	Made from cast brass
Certifications	<ul style="list-style-type: none"> <li>WS401/402CVX Meets ANSI/BHMA 156.16, L12101</li> <li>WS401/402CCV Meets ANSI/BHMA 156.16, L12251</li> </ul>

## Dimensions

Base diameter	Base thickness	Overall projection
2 1/2"	3/8"	1"

## Finishes

BHMA	Description	Substrate	Finish
605	Bright Brass	Brass	US3
606	Satin Brass	Brass	US4
612	Satin Bronze	Brass	US10
613	Oil Rubbed Bronze	Brass	US10B
619	Satin Nickel	Brass	US15
625	Bright Chrome	Brass	US26
626	Satin Chrome	Brass	US26D

For other colors, consult factory.

Note: WS401/402 is the full part number. 401 and 402 are not different products.



WS401CCV and WS402CCV

# WS404CVX

## Wall bumper (convex)

- Compact size
- Constructed in cast brass
- Totally concealed mounting discourages vandalism or tampering
- Unit furnished with grey convex rubber bumper
- Packed with fasteners for drywall/wood applications

## Specifications

Material substrate	Made from cast brass
--------------------	----------------------

## Dimensions

Base diameter	Overall projection
1"	17/32"

## Finishes - brass

BHMA	Description	Substrate	Finish
605	Bright Brass	Brass	US3
606	Satin Brass	Brass	US4
609	Blackened Brass	Brass	US5
612	Satin Bronze	Brass	US10
613	Oil Rubbed Bronze	Brass	US10B
619	Satin Nickel	Brass	US15
622	Matte Black	Brass	BLK
625	Bright Chrome	Brass	US26
626	Satin Chrome	Brass	US26D
–	Aged Bronze	Brass	643e/716

For other colors, consult factory.



## Door stops, holders and silencers

## Wall bumpers

WS406, WS407CVX /  
WS406, WS407CCV

## Wall bumpers (convex and concave models)

- Constructed in sturdy yet economical wrought base of brass or stainless steel construction
- Feature concealed tamper-proof mounting
- Shipped factory preassembled backplate to reduce installation cost
- Easy installation by inserting screwdriver through small hole in rubber
- WS406/407CVX – convex rubber bumper, packed with fasteners for drywall/wood applications
- WS406/407CCV – concave rubber bumper which avoids damage to locks with projecting buttons, packed with fasteners for drywall/wood applications



WS406CVX and WS407CVX

## Specifications

Material substrate	Made from brass and stainless steel
Certifications	<ul style="list-style-type: none"> <li>WS406/407CVX Meets ANSI/BHMA 156.16, L22201 for brass and L52201 for stainless steel</li> <li>WS406/407CCV Meets ANSI/BHMA 156.16, L22251 for brass and L52251 for stainless steel</li> </ul>

## Dimensions

Base diameter	Base thickness	Overall projection
2 1/2"	3/8"	1"

## Finishes

BHMA	Description	Substrate	Finish
605	Bright Brass	Brass	US3
606	Satin Brass	Brass	US4
609	Blackened Brass	Brass	US5
612	Satin Bronze	Brass	US10
613	Oil Rubbed Bronze	Brass	US10B
619	Satin Nickel	Brass	US15
622	Matte Black	Brass	BLK
625	Bright Chrome	Brass	US26
626	Satin Chrome	Brass	US26D
–	Aged Bronze	Brass	643e/716
630	Stainless Steel	Stainless steel	US32D

For other colors, consult factory.

## 411R-W

## Wall bumper - adhesive

- Adhesive-backed wall door stop for use on clean, smooth, flat surfaces only
- Non-marring white rubber
- Concave design permits knob to strike stop without damaging or engaging lock mechanism



## Specifications

Material substrate	Made from rubber
--------------------	------------------

## Dimensions

Base diameter	Base thickness	Overall projection
1 7/8"	3/8"	1 1/16"

## Finishes

BHMA	Description	Substrate	Finish
–	White	Rubber	R-W

# WS11 / WS11X

## Wall stops

- Hexagon section on unit aids in fastening unit when expansion shield is used
- Replaceable black rubber bumpers features off-set shoulder and threaded shank that screws into body of unit
- WS11 is packed with fasteners for drywall/wood applications
- WS11X is packed with fasteners for heavy duty masonry applications



WS11

## Specifications

Material substrate	Made from cast brass
Certifications	<ul style="list-style-type: none"> <li>▪ WS11 Meets ANSI/BHMA 156.16, L12011</li> <li>▪ WS11X Meets ANSI/BHMA 156.16, L12021</li> </ul>

## Dimensions

Base diameter	Overall projection
2"	3 3/4"

## Finishes

BHMA	Description	Substrate	Finish
605	Bright Brass	Brass	US3
606	Satin Brass	Brass	US4
612	Satin Bronze	Brass	US10
613	Oil Rubbed Bronze	Brass	US10B
625	Bright Chrome	Brass	US26
626	Satin Chrome	Brass	US26D

For other colors, consult factory.

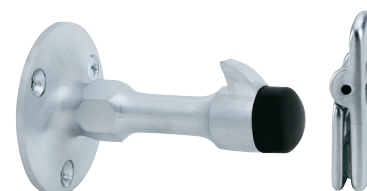
## Available accessories

- Security pin screws
- Replaceable black non-marring rubber bumper

# WS20 / WS20X

## Manual wall holders

- Hexagon section on unit aids in fastening unit when expansion shield is used
- Replaceable black rubber bumpers feature off-set shoulder and threaded shank that screws into body of holder
- Hinged strike furnished matches body material and finish
- WS20 is packed with fasteners for drywall/wood applications
- WS20X is packed with fasteners for heavy duty masonry applications



WS20

## Specifications

Material substrate	Made from cast brass or aluminum
Certifications	<ul style="list-style-type: none"> <li>▪ WS20 Meets ANSI/BHMA 156.16, L11341 for brass and L31341 for aluminum</li> <li>▪ WS20X Meets ANSI/BHMA 156.16, L11351 for brass and L31351 for aluminum</li> </ul>

## Dimensions

Base diameter	Overall projection	Strike height	Strike width
2 3/8"	4"	2"	1"

## Finishes

BHMA	Description	Substrate	Finish
605	Bright Brass	Brass	US3
606	Satin Brass	Brass	US4
612	Satin Bronze	Brass	US10
613	Oil Rubbed Bronze	Brass	US10B
625	Bright Chrome	Brass	US26
626	Satin Chrome	Brass	US26D
628	Satin Aluminum	Aluminum	US28

For other colors, consult factory.

## Available accessories

- Security pin screws
- Replaceable black non-marring rubber bumper

## Door stops, holders and silencers

### Wall stops and holders

# WS33 / WS33X

#### Wall stops

- Replaceable rubber bumper with offset shoulder screws into cavity on body to prevent loss or theft
- Sloping design discourages vandalism
- WS33 is packed with fasteners for drywall/wood applications.
- WS33X is packed with fasteners for heavy duty masonry applications

#### Specifications

Material substrate	Made from cast brass
Certifications	<ul style="list-style-type: none"> <li>▪ WS33 Meets ANSI/BHMA 156.16, L12011</li> <li>▪ WS33X Meets ANSI/BHMA 156.16, L12021</li> </ul>

#### Dimensions

Base diameter	Overall projection
2 1/4" W x 3" H	3 3/4"

#### Finishes

BHMA	Description	Substrate	Finish
626	Satin Chrome	Brass	US26D

For other colors, consult factory.

#### Available accessories

- Security pin screws
- Replaceable black non-marring rubber bumper



# WS65

#### Wall stop

- Replaceable non-marring white rubber bumper
- Packed with fasteners for wood applications

#### Specifications

Material substrate	Made from cast aluminum
--------------------	-------------------------

#### Dimensions

Base diameter	Overall projection
1 5/8"	3 3/4"

#### Finishes

BHMA	Description	Substrate	Finish
666	Bright Brass	Aluminum	US3
668	Satin Bronze	Aluminum	US10
703	Oil Rubbed Bronze	Aluminum	US10B
—	Clear Satin Aluminum	Aluminum	US27

For other colors, consult factory.

#### Available accessories

- Replaceable white non-marring rubber bumper
- Replaceable black non-marring rubber bumper



## Door stops, holders and silencers

### Wall stops and holders

# WS443 / WS447

#### Wall stops

- Ideal for interior or exterior use
- Replaceable black non-marring rubber tip
- WS443 is packed with fasteners for heavy duty masonry applications
- WS447 is packed with fasteners for drywall/wood applications

#### Specifications

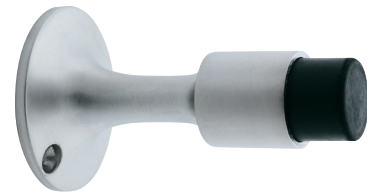
Material substrate	Made from cast brass
Certifications	<ul style="list-style-type: none"> <li>▪ WS443 Meets ANSI/BHMA 156.16, L12021 for brass and L32021 for aluminum</li> <li>▪ WS447 Meets ANSI/BHMA 156.16, L12011 for brass and L32011 for aluminum</li> </ul>

#### Dimensions

Base diameter	Overall projection
2 1/4"	3 11/16"

#### Available accessories

- Replaceable black non-marring rubber bumper

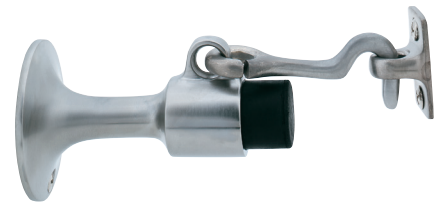


WS443

# WS445 / WS449

#### Manual wall holders

- Unit functions as a stop but serves as a hold-open device when hook is manually engaged in strike
- Unit requires manual disengagement to release hold-open
- Replaceable black non-marring rubber tip
- WS445 is packed with fasteners for heavy duty masonry applications
- WS449 is packed with fasteners for drywall/wood applications



WS445

#### Specifications

Material substrate	Made from cast brass or aluminum
Certifications	<ul style="list-style-type: none"> <li>▪ WS445 Meets ANSI/BHMA 156.16, L11351 for brass</li> <li>▪ WS449 Meets ANSI/BHMA 156.16, L11341 for brass and L31341 for aluminum</li> </ul>

#### Dimensions

Base diameter	Overall projection	Engaged projection
2 1/4"	3 11/16"	5 3/4"
Strike height	Strike width	Strike projection
1 1/2"	13/16"	13/16"

#### Available accessories

- Replaceable black non-marring rubber bumper

#### WS443, WS445, WS447 and WS449 Finishes

BHMA	Description	Substrate	Finish
605	Bright Brass	Brass	US3
606	Satin Brass	Brass	US4
612	Satin Bronze	Brass	US10
613	Oil Rubbed Bronze	Brass	US10B
619*	Satin Nickel	Brass	US15
622*	Matte Black	Brass	BLK
625	Bright Chrome	Brass	US26
626	Satin Chrome	Brass	US26D
628*	Satin Aluminum	Aluminum	US28
—	Aged Bronze	Brass	643e/716

\*Not available on WS443, WS445 or WS447. For other colors, consult factory.



## Door stops, holders and silencers

### Wall stops and holders

# WS40

#### Automatic wall holder

- Holder is mounted on wall and strike is mounted on door
- Roller on holder rides up seats itself on strike, with a heavy duty bumper pad deadening the sound and shock
- Packed with fasteners for light duty masonry and drywall/wood applications

#### Specifications

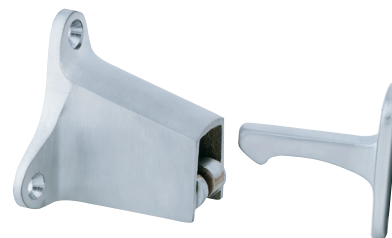
Material substrate	Made from cast brass or aluminum
Certifications	Meets ANSI/BHMA 156.16, L11291 for brass, and L31291 for aluminum

#### Dimensions

Base height	Base width	Base projection	Engaged projection	Strike height	Strike width	Strike projection
2"	2 1/2"	2 1/4"	3 1/2"	2 1/16"	3/4"	2"

#### Available accessories

- Security pin screw
- Hook package



# WS45 / WS45X

#### Automatic wall holder

- Spring loaded roller rides up the face of the strike, seating itself on the strike, holding the door firmly in the open position
- A heavy rubber pad cushions the shock and absorbs the sound
- With unit mounted on door and the strike on wall, vertical adjustment is available on body
- The strike is adjustable 45 degrees left or right, both adjustments easily accomplished at time of installation or at a later date
- WS45 is packed with fasteners for drywall/wood applications
- WS45X is packed with fasteners for heavy duty masonry applications

#### Specifications

Material substrate	Made from cast brass or aluminum
Certifications	Both meet ANSI/BHMA 156.16, L11291 for brass, and L31291 for aluminum

#### Dimensions

Base height	Base width	Base projection	Engaged projection	Strike diameter	Strike projection
3 11/16"	3"	2"	3 7/16"	2 3/8"	3"

#### Available accessories

- Security pin screw
- Hook package



#### WS40, WS45 and WS45X Finishes

BHMA	Description	Substrate	Finish
605	Bright Brass	Brass	US3
606	Satin Brass	Brass	US4
612	Satin Bronze	Brass	US10
613	Oil Rubbed Bronze	Brass	US10B
619*	Satin Nickel	Brass	US15
622*	Matte Black	Brass	BLK
625	Bright Chrome	Brass	US26
626	Satin Chrome	Brass	US26D
628	Satin Aluminum	Aluminum	US28
—*	Aged Bronze	Brass	643e/716

\*Not available on WS40. For other colors, consult factory.

# FS452

## Kick down holder

- Units provide simple hold and release, activated with a touch of the foot
- Stainless steel spring
- Replaceable black non-marring rubber shoes have corrugated bottoms to provide secure grip
  - Rubber shoe is securely fastened with screw
- Shoes are easily replaced when worn
- Packed with fasteners for wood applications
- FS452-4 has a door-to-floor clearance of 2" or less
- FS452-5 has a door-to-floor clearance up to 3"

### Specifications

Material substrate	Made from cast brass or aluminum
Certifications	Meets ANSI/BHMA 156.16, L11383 for brass, and L31383 for aluminum

### Dimensions

Door to floor clearance	Plate height	Plate width
FS452-4: 2" or less	FS452-4: 2 1/8"	FS452-4: 1"
FS452-5: up to 3"	FS452-5: 2 1/8"	FS452-5: 1"

### Available accessories

- Replaceable black non-marring rubber shoes



# FS455

## 4" Kick down holder

- Units provide simple hold and release, activated with a touch of the foot
- Stainless steel spring
- Replaceable black non-marring rubber shoes have corrugated bottoms to provide secure grip
  - Rubber shoe is securely fastened with screw
- Shoes are easily replaced when worn
- Packed with fasteners for wood applications
- Door-to-floor clearances of 2" or less

### Specifications

Material substrate	Made from cast brass or aluminum
Certifications	Meets ANSI/BHMA 156.16, L11382 for brass, and L31382 for aluminum

### Dimensions

Door to floor clearance	Plate height	Plate width
2" or less	1 3/4"	1 3/4"

### Available accessories

- Replaceable black non-marring rubber shoes



## FS452 and FS455 Finishes

BHMA	Description	Substrate	Finish
605	Bright Brass	Brass	US3
606	Satin Brass	Brass	US4
612	Satin Bronze	Brass	US10
613	Oil Rubbed Bronze	Brass	US10B
619	Satin Nickel	Brass	US15
622	Matte Black	Brass	BLK
625	Bright Chrome	Brass	US26
626	Satin Chrome	Brass	US26D
—	Aged Bronze	Brass	643e/716
628	Satin Aluminum	Aluminum	US28
666*	Bright Brass	Aluminum	US3AL
—*	Blackened Brass	Aluminum	US5AL
668*	Satin Bronze	Aluminum	US10AL
—*	Clear Satin Aluminum	Aluminum	US27

\* Not available on FS452. For other colors, consult factory.

## Door stops, holders and silencers

### Wall stops and holders

# FS544 / FS555

#### Kick down holders

- FS544 - 4", FS555 - 5"
- Units provide an economical method to hold open doors
- Stainless steel spring
- Replaceable grey non-marring rubber shoes have corrugated bottoms to provide secure grip
  - Rubber shoe is securely fastened with screw
- Shoes are easily replaced when worn
- Packed with fasteners for wood applications
- FS544 for door-to-floor clearances of 2" or less
- FS555 for door-to-floor clearances up to 3"



FS544

#### Specifications

Material substrate	Made from cast iron
Certifications	<ul style="list-style-type: none"> <li>▪ FS544 Meets ANSI/BHMA 156.16, L11381</li> <li>▪ FS555 Meets ANSI/BHMA 156.16, L11391</li> </ul>

#### Dimensions

Door to floor clearance	Plate height	Plate width
▪ FS544: 2" or less	▪ FS544: 2 1/4"	▪ FS544: 1 7/16"
▪ FS555: up to 3"	▪ FS555: 2 1/4"	▪ FS555: 1 7/16"

#### Finishes

BHMA	Description	Substrate	Finish
706	Brass Painted	Iron	SP4
691	Bronze Painted	Iron	SP10
689	Aluminum Painted	Iron	SP28
695	Dark Bronze Painted	Iron	SP313
–	Matte Black	Iron	BLK

For other colors, consult factory.

#### Available accessories

- Replaceable grey non-marring rubber shoes

# FS1153

## Plunger type door holder

- Provides a contemporary yet economical method of positive hold-open
- Spring operated plunger activates with minimal pressure, releasing instantly with a light tap on the plat-form lever
- Provides a 1 5/8" throw for all types of doors
- Ribbed grey non-marring rubber shoe is securely fastened to unit with a screw and is easily replaced when worn
- Packed with fasteners for wood applications

### Specifications

Material substrate	Made from cast aluminum
Certifications	Meets ANSI/BHMA 156.16, L11401

### Dimensions

Height	Width	Depth
5 1/2"	2"	1 1/4"

### FS452 and FS455 Finishes - aluminum

BHMA	Description	Substrate	Finish
628	Satin Aluminum	Aluminum	US28

For other colors, consult factory.

### Available accessories

- Replaceable grey non-marring rubber shoes



# FS1154

## Plunger type door holder

- Plunger and internal parts are plated steel and provides a 1 1/4" throw for all types of doors
- Plunger is easily activated with minimal pressure, releasing instantly with a light tap on the platform lever
- Round non-marring rubber shoe is securely fastened with a screw in flanged cup to prevent movement or loss (when worn, shoes are easily replaced)
- Packed with fasteners for wood applications

### Specifications

Material substrate	Made from cast brass
Certifications	Meets ANSI/BHMA 156.16, L31401

### Dimensions

Height	Width	Depth
6 1/4"	1 1/2"	1 7/16"

### Finishes

BHMA	Description	Substrate	Finish
605	Bright Brass	Brass	US3
606	Satin Brass	Brass	US4
612	Satin Bronze	Brass	US10
613	Oil Rubbed Bronze	Brass	US10B
625	Bright Chrome	Brass	US26
626	Satin Chrome	Brass	US26D

For other colors, consult factory.

### Available accessories

- Replaceable grey non-marring rubber shoes



## Door stops, holders and silencers

### Roller bumpers

# RB470 / RB471 / RB472

### Roller bumpers (straight and offset models)

- RB470 Offset roller bumper - Used where two doors open against each other to prevent damage to the doors or hardware
- RB471 (4 1/2") and RB472 (6") Straight roller bumpers - Ideal for use in situations where doors meet each other at approximate right angles (back to back)
- Grey rubber roller
- Packed with fasteners for wood applications

### Specifications

Material substrate	Made from cast brass
Certifications	<ul style="list-style-type: none"> <li>▪ RB470 Meets ANSI/BHMA 156.16, L12212</li> <li>▪ RB471 Meets ANSI/BHMA 156.16, L12192</li> <li>▪ RB472 Meets ANSI/BHMA 156.16, L12202</li> </ul>

### Dimensions

Base size/diameter	Length	Arm offset
▪ RB470 size: 1 11/16" x 2 1/4"	▪ RB470: 5"	▪ RB470: 2 3/4"
▪ RB471 diameter: 2"	▪ RB471: 4 1/2"	
▪ RB472 diameter: 2"	▪ RB472: 6"	

### Finishes

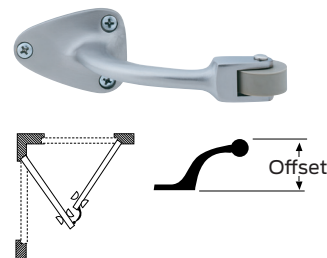
BHMA	Description	Substrate	Finish
605	Bright Brass	Brass	US3
606 <sup>2</sup>	Satin Brass	Brass	US4
612 <sup>1</sup>	Satin Bronze	Brass	US10
613 <sup>1</sup>	Oil Rubbed Bronze	Brass	US10B
619 <sup>1</sup>	Satin Nickel	Brass	US15
625	Bright Chrome	Brass	US26
626	Satin chrome	Brass	US26D

For other colors, consult factory.

1. Only available on RB472.
2. Only available on RB471 and RB472.

### Available accessories

- Replaceable grey non-marring rubber shoes



RB470



RB471



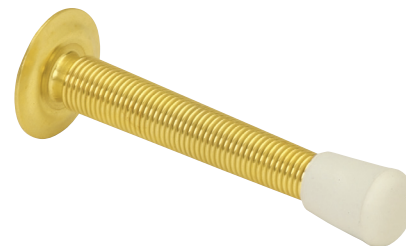
RB472



# 060 / 061

## Flexible door stops

- 060 - 3", 061 - 4"
- Utilizes heavy gauge spring to maintain rigid protections
- Simple to install - only a screwdriver required
- Packed disassembled for quick installation
- White rubber tip
- Packed with fasteners for wood applications



## Specifications

Material substrate	Made from steel
Certifications	Meets ANSI/BHMA 156.16

## Dimensions

Base diameter	Tip diameter	Projection
1"	1 9/16"	<ul style="list-style-type: none"> <li>▪ 060: 3"</li> <li>▪ 061: 4"</li> </ul>

## Finishes

BHMA	Description	Substrate	Finish
631	Matte Black	Steel	F-BLK
632	Bright Brass	Steel	F3
638	Blackened Brass	Steel	F5
639	Satin Bronze	Steel	F10
640	Oil Rubbed Bronze	Steel	F10B
645	Bright Nickel	Steel	F14
—	Aged Bronze	Steel	F-643E/716
646	Satin Nickel	Steel	F15
651	Bright Chrome	Steel	F26
652	Satin Chrome	Steel	F26D
—*	White	Steel	F-W

\* Only available on 061. For other colors, consult factory.

## Available accessories

- Replaceable white rubber tip

## 60 / 61

## Base door stops

- 60 - 3 <sup>3</sup>/<sub>4</sub>", 61 - 3 <sup>1</sup>/<sub>8</sub>"
- Simple to install - only a screwdriver required
- Packed disassembled for quick installation
- Available in three sizes to accommodate varying areas of installation and door trim dimensions
- White rubber tip
- Welded fastener for wood applications

Note: 61A - 643e/716 ships with black rubber tips

## Specifications

Material substrate      Made from brass, aluminum or zinc

## Dimensions

Base diameter	Tip diameter	Projection
▪ 60: 1"	▪ 60: <sup>5</sup> / <sub>8</sub> "	▪ 60: 3 <sup>3</sup> / <sub>4</sub> "
▪ 61 Brass/aluminum: <sup>7</sup> / <sub>8</sub> "	▪ 61 Brass/aluminum: <sup>5</sup> / <sub>8</sub> "	▪ 61 Brass/aluminum: 3 <sup>1</sup> / <sub>8</sub> "
▪ 61 Zinc: 1"	▪ 61 Zinc: <sup>5</sup> / <sub>8</sub> "	▪ 6 Zinc: 2 <sup>7</sup> / <sub>8</sub> "

## Finishes - brass

BHMA	Description	Substrate	Finish
605	Bright Brass	Brass	B3
606	Satin Brass	Brass	B4
609	Blackened Brass	Brass	B5
612	Satin Bronze	Brass	B10
613	Oil Rubbed Bronze	Brass	B10B
619	Satin Nickel	Brass	B15
620*	Blackened Nickel	Brass	B15A
622	Matte Black	Brass	B-BLK
625	Bright Chrome	Brass	B26
626	Satin Chrome	Brass	B26D
—	Aged Bronze	Brass	B-643e/716

## Finishes - aluminum

BHMA	Description	Substrate	Finish
666	Bright Brass	Aluminum	A3
—*	Blackened Brass	Aluminum	A5
668*	Satin Bronze	Aluminum	A10
703	Oil Rubbed Bronze	Aluminum	A10B
669	Bright Nickel	Aluminum	A14
670	Satin Nickel	Aluminum	A15
672	Bright Chrome	Aluminum	A26
702	Satin Chrome	Aluminum	A26D
673	Aluminum Clear Coat	Aluminum	A92
—	Aged Bronze	Aluminum	A-643e/716
—	Matte Black	Aluminum	A-BLK
—*	White	Aluminum	A-W

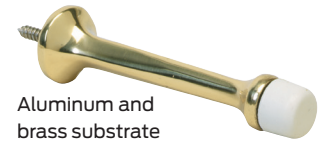
## Finishes - zinc

BHMA	Description	Substrate	Finish
—*	Satin Nickel	Zinc	Z619
—*	Aged Bronze	Zinc	Z-643e/716

\*Only available on 61. For other colors, consult factory.

## Available accessories

- Replaceable white rubber tip
- Replaceable black rubber tip



Aluminum and  
brass substrate



Zinc substrate

# 63

## Flexible door stop

- Utilizes heavy gauge spring to maintain rigid protections
- Simple to install - only a screwdriver required
- Packed disassembled for quick installation
- White rubber tip
- Packaged with fastener for wood applications



### Specifications

Material substrate Made from wrought steel

### Dimensions

Base diameter	Tip diameter	Projection
1"	9/16"	3"

### Finishes

BHMA	Description	Substrate	Finish
631	Matte Black	Steel	F-BLK
632	Bright Brass	Steel	F3
638	Blackened Brass	Steel	F5
-	Aged Bronze	Steel	F-643E/716
646	Satin Nickel	Steel	F15
651	Bright Chrome	Steel	F26
652	Satin Chrome	Steel	F26D
-	White	Steel	F-W

For other colors, consult factory.

### Available accessories

- Replaceable white rubber tip
- Replaceable black rubber tip

# 64

## Base door stops

- Base door stop features deluxe one-piece styling
- Easily screws into base
- Designed with hexagonal head to accommodate wrench or pliers when installing
- White rubber tip
- Packaged with fastener for wood applications



### Specifications

Material substrate Made from solid brass or aluminum

### Dimensions

Base diameter	Tip diameter	Projection
1"	9/16"	3 1/4"

### Finishes

BHMA	Description	Substrate	Finish
605	Bright Brass	Brass	B3
606	Satin Brass	Brass	B4
609	Blackened Brass	Brass	B5
612	Satin Bronze	Brass	B10
613	Oil Rubbed Bronze	Brass	B10B
619	Satin Nickel	Brass	B15
622	Matte Black	Brass	B-BLK
625	Bright Chrome	Brass	B26
626	Satin Chrome	Brass	B26D
-	Aged Bronze	Brass	B-643e/716
666	Bright brass	Aluminum	A3
703	Oil rubbed bronze	Aluminum	A10B
673	Aluminum clear coat	Aluminum	A92

### Available accessories

- Replaceable white rubber tip
- Replaceable black rubber tip

## Door stops, holders and silencers

### Residential door stops

# 69

#### Hinge pin door stop

- Economical solution for use on low frequency, light weight, residential 3 1/2" or 4" hinged doors where the installation of a standard door stop or overhead is not desirable
- Adjustable for 70° to 100° door openings
- Positive slip proof adjustment
- White non-marring rubber tips
- Removable bushings accommodate 1/4" to 5/16" diameter hinge pins
- Easy installation—only a screwdriver required



#### Specifications

Material substrate      Made from burnished wrought steel

#### Dimensions

Base diameter	Tip diameter	Projection
1"	9/16"	3 1/4"

#### Finishes

BHMA	Description	Substrate	Finish
631	Matte black	Steel	F-BLK
632	Bright brass	Steel	F3
638	Blackened brass	Steel	F5
639	Satin bronze	Steel	F10
640	Oil rubbed bronze	Steel	F10B
645	Bright nickel	Steel	F14
—	Aged bronze	Steel	F-643e/716
646	Satin nickel	Steel	F15
647	Bright nickel	Steel	F15A
651	Bright chrome	Steel	F26
652	Satin chrome	Steel	F26D

For other colors, consult factory.

#### Available accessories

- Replaceable white rubber tip

# 70

## Hinge pin door stop

- Economical solution for use on low frequency, light weight, residential 3 1/2" or 4" hinged doors where the installation of a standard door stop or overhead is not desirable
- Designed for narrow trim installation
- High quality rubber bumpers - shoulder on stud supports rubber through entire body for engineered cushioning
- Removable bushings accommodate 1/4" to 5/16" diameter hinge pins
- Easy installation
- White rubber and nylon tips

Note: 70A - 716 ships with black rubber tips

## Specifications

Material substrate Made from brass, aluminum or zinc

### Finishes - brass

BHMA	Description	Substrate	Finish
605	Bright Brass	Brass	B3
606	Satin Brass	Brass	B4
609	Blackened Brass	Brass	B5
612	Satin Bronze	Brass	B10
613	Oil Rubbed Bronze	Brass	B10B
619	Satin Nickel	Brass	B15
622	Matte Black	Brass	B-BLK
625	Bright Chrome	Brass	B26
626	Satin Chrome	Brass	B26D
-	Aged Bronze	Brass	B-643e/716

### Finishes - aluminum

BHMA	Description	Substrate	Finish
666	Bright Brass	Aluminum	A3
667	Satin Brass	Aluminum	A4
-	Blackened Brass	Aluminum	A5
668	Satin Bronze	Aluminum	A10
703	Oil Rubbed Bronze	Aluminum	A10B
669	Bright Nickel	Aluminum	A14
670	Satin Nickel	Aluminum	A15
672	Bright Chrome	Aluminum	A26
702	Satin Chrome	Aluminum	A26D
673	Aluminum Clear Coat	Aluminum	A92
-	Aged Bronze	Aluminum	A-643e/716
-	Matte Black	Aluminum	A-BLK
-	White	Aluminum	A-W

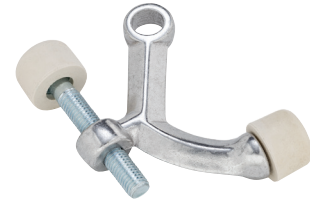
### Finishes - zinc

BHMA	Description	Substrate	Finish
-	Dark Bronze	Zinc	Z406E
-	Aged Bronze	Zinc	Z-643e/716

For other colors, consult factory.

## Available accessories

- Replaceable white rubber tip



Aluminum substrate



Brass and zinc substrate



## Door stops, holders and silencers

### Residential door stops

# 72

#### Hinge pin door stop

- Economical solution for use on low frequency, light weight, residential 3 1/2" or 4" hinged doors where the installation of a standard door stop or overhead is not desirable
- 85° to 125° Door opening adjustments
- Designed for narrow trim installation
- White rubber bumpers - shoulder on stud supports rubber through entire body for engineered cushioning
- Removable bushings accommodate 1/4" to 5/16" diameter hinge pins
- Easy installation

#### Specifications

Material substrate    Made from cast zinc

#### Dimensions

##### Post length

1 7/8"

#### Finishes

BHMA	Description	Substrate	Finish
676	Matte Black	Zinc	Z-BLK
677	Bright Brass	Zinc	Z-605E
—	Blackened Brass	Zinc	Z-609E
704	Oil Rubbed Bronze	Zinc	Z-613E
—	Satin Nickel	Zinc	Z-619E
681	Bright Chrome	Zinc	Z-625E
682	Satin Chrome	Zinc	Z-626E
—	Aged Bronze	Zinc	Z-643e/716
—	White	Zinc	Z-W

For other colors, consult factory.

#### Available accessories

- Replaceable white rubber tip



# 73

#### Hinge pin door stop

- Economical solution for use on low frequency, 4 1/2" hinges or above hinged doors where the installation of a standard door stop or overhead is not desirable
- 85° to 125° Door opening adjustments
- Designed for narrow trim installation
- White rubber bumpers - shoulder on stud supports rubber through entire body for engineered cushioning
- Removable bushings accommodate 1/4" to 5/16" diameter hinge pins

#### Specifications

Material substrate    Made from cast zinc

#### Finishes

BHMA	Description	Substrate	Finish
677	Bright Brass	Zinc	Z-605E
704	Oil Rubbed Bronze	Zinc	Z-613E
—	Satin Nickel	Zinc	Z-619E
681	Bright Chrome	Zinc	Z-625E

For other colors, consult factory.

#### Available accessories

- Replaceable white rubber tip



# SR64

## Door silencer - metal

- For use on metal frames featuring pneumatic design that, once installed, forms an air pocket to absorb shock and reduce noise of door closing
- Tamper-proof once installed on the frame
- Proper installation also eliminates door rattle and provides constant tension for door latches or locks
- Packed in bags of 100
- Grey also available in bulk pack of 2500
- Each bag has an installation tool included



### Specifications

Material substrate	Made from 60 Durometer styrene butadiene rubber
Certifications	Meets ANSI/BHMA 156.16, L03011

### Dimensions

Diameter	Projection
1/2"	1/8"

# SR65

## Door silencer - wood

- For use on wood frames, also feature pneumatic design to cushion shock and absorb noise
- To prevent removal, a small brad should be driven into stop strip and through stem of silencer, as shown in the detail
- Packed in bags of 100



### Specifications

Material substrate	Made from 60 Durometer styrene butadiene rubber
Certifications	Meets ANSI/BHMA 156.16, L03021

### Dimensions

Diameter	Width	Projection
3/4"	3/8"	1/8"

# SR66

## Door silencer - adhesive

- Self adhesive rubber silencers
- Economical installation requires no drilling of frames
- Packed two sheets of 50 (100 minimum)



### Specifications

Material substrate	Made from 60 Durometer styrene butadiene rubber
Certifications	Meets ANSI/BHMA 156.16, L03021

### Dimensions

Diameter	Projection
1/2"	1/8"

### SR64, SR65 and SR66 Finishes

BHMA	Description	Substrate	Finish
—*	Brown	Rubber	BRN
—	Grey	Rubber	GRY
—*	White	Rubber	WHT

\*Only available on SR66. For other colors, consult factory.

## Door stops, holders and silencers

## Crash stop

## CS115

## Crash stop

- Specially designed for full-size exterior doors
- Tear resistant, grey vinyl cover
- Heavy duty compression spring assembled to both ends of chain and end brackets
- Packed with sheet metal screw.
- Cast brass brackets with solid, welded steel chain
- Optional sex bolt mounting available in US26D (626) only



## Specifications

Available lengths	<ul style="list-style-type: none"> <li>▪ 20 1/2" - Recommended for 30" door width (product no. CS115-20)</li> <li>▪ 25 1/2" - Recommended for 36" door width (product no. CS115-25)</li> <li>▪ 30 1/2" - Recommended for 42" door width (product no. CS115-30)</li> </ul>
-------------------	---

## Dimensions

<b>Bracket size</b>
1 9/16" x 1 9/16"

## Finishes

BHMA	Description	Substrate	Finish
613	Oil Rubbed Bronze	Brass	B10B
626	Satin Chrome	Brass	B26D

## Available accessories

- Through bolt mounting available in US26D (626) only
- Through bolt with cap nut mounting available in US26D (626) only