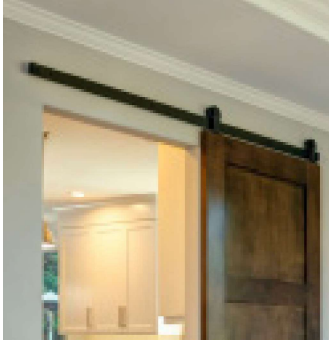


# SLIDING BARN DOOR HARDWARE



## eCONESTOGA - ECONOMY SERIES BARN DOOR HARDWARE

- Durable powder-coated steel
- Door weight up to 250 lbs
- Wood door 1-3/4" thick

### System Includes

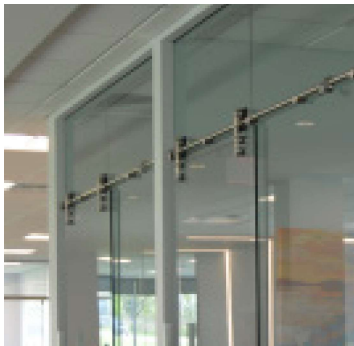
- Black steel flat rail (72" or 96")
- Two hangers
- Two end stops
- Two anti-jump disks
- One channel guide pair
- One fin guide

### Standards

Meets performance requirements ANSI/BHMA A156.14 (Grade 1) for sliding doors by exceeding 100,000 cycles  
Type: D02111-250

### Applications

- Assisted Living
- Hospitality
- Multi-Family
- Office & Retail
- Residential



## 9400 SERIES - STAINLESS STEEL DOOR HARDWARE

- 304 stainless steel track and hangers with nylon coated rollers
- Door weight up to 250 lbs
- Wood door 1-3/4" thick (top-mount hangers)
- Door bottom 3/8" undercut
- Glass doors 3/8" to 1/2" thick

### System Includes

- Stainless steel track (78" or 96"\*) with two end caps - available in round rail
- Hangers with wall brackets
- One door bottom guide
- Two track stops
- Mounting and installation hardware

### Standards

Meets performance requirements ANSI/BHMA A156.14 (Grade 1) for sliding doors by exceeding 100,000 cycles  
Type: D02111-250

### Applications

- Commercial
- Hospitality
- Multi-Family
- Office & Retail
- Residential

---

## SLIDING DOOR - WALL-MOUNT



### 9710HD SERIES WALL-MOUNT SLIDING DOOR HARDWARE

- Door weight up to 250 lbs
- Door thickness 1-1/8" - 1-3/4"
- Easy glide 4-wheel ball bearing carriers
- Fastener concealment
- Available in lengths 60", 72", 96" & 144"
- Available in anodized aluminum and dark bronze

#### System Includes

- Aluminum wall-mount track
- Fascia
- Two end caps
- Two Hangers
- Hardware

#### Standards

Meets performance requirements ANSI/BHMA A156.14 (Grade 1) for sliding doors by exceeding 100,000 cycles

Type: D02111-250

#### Applications

- Commercial
- Healthcare
- Hospitality
- Office
- Residential

---

## SLIDING DOOR HARDWARE - ACCESSORIES



### 9458 BARN DOOR PRIVACY LOCK

Compliments the 9400 Stainless steel and eConestoga Series Sliding Door Hardware

#### Applications

- Assisted Living Facilities
- Hospitality
- Multi-Family



### 9459 SURFACE JAMB MOUNT

Compliments the 9400 Stainless steel and eConestoga Series Sliding Door Hardware

#### Applications

- Assisted Living Facilities
- Hospitality
- Multi-Family

## POCKET DOOR HARDWARE



### 9878CS (coming soon)

- Door weight up to 150 lbs per panel bi-fold
- Door thickness from 1-1/8" - 1-3/4"
- Track is extruded aluminum jump-proof style with integral
- Available in lengths: 72" & 96"

#### System Includes

- Aluminum track
- Two hangers
- Pair of door guides
- One bumper
- Parts bag

#### Certifications

- Conforms to ANSI A156.14
- Type: D02321-150

#### Applications

- Commercial
- Healthcare
- Hospitality
- Office
- Residential



### 9878HD (coming soon)

- Door weight up to 250 lbs per door
- Door thickness from 1-1/8" - 1-3/4"
- Track is extruded aluminum jump-proof style with "V" shaped rails
- Available in lengths: 72" & 96"

#### System Includes

- Aluminum track
- Parts bag
- Two hangers
- Pair of door guides
- One bumper

#### Certifications

- Conforms to ANSI A156.14
- Type: D02321-250

#### Applications

- Commercial
- Healthcare
- Hospitality
- Office
- Residential

# POCKET DOOR FRAME KITS



## 9600 SERIES COMMERCIAL POCKET DOOR FRAME KITS 9628CS | 9629CS | 9630CS | 9631CS

- V-groove jump proof aluminum track
- Pre-assembled header assembly goes up quickly
- Real wood split studs, size 3/4" x 1-3/4" width relative to length, steel encased for rigidity and to prevent fastener penetration into the pocket
- 2 pairs of split studs with wood inserts

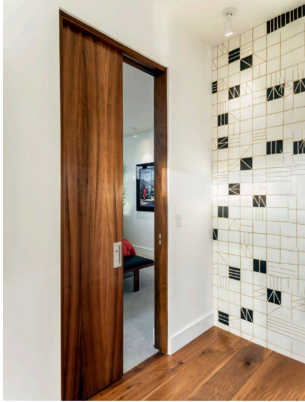
### Certifications

- Meets performance requirements ANSI/BHMA A156.14 (Grade 1) for sliding doors by exceeding 100,000 cycles in operation
- Type: D02311-150
- ADA Compliant

PART #	MAX DOOR WEIGHT	DOOR THICKNESS	DOOR WIDTH	DOOR HEIGHT	HANGER
9628CS	150 lbs (68 kg)	1-3/8" - 1-3/4" (35mm-44mm)	3'0" (914mm)	9'0" (2743mm)	9805
9629CS	150 lbs (68 kg)	1-3/8" - 1-3/4" (35mm-44mm)	3'0" (914mm)	8'0" (2438mm)	9805
9630CS	150 lbs (68 kg)	1-3/8" - 1-3/4" (35mm-44mm)	3'0" (914mm)	7'0" (2134mm)	9805
9631CS	150 lbs (68 kg)	1-3/8" - 1-3/4" (35mm-44mm)	3'0" (914mm)	6'8" (2032mm)	9805

For doors in excess of 150 lbs, we recommend the use of our 9850HD or 9852HD Pocket Door kits.

# POCKET DOOR FRAME KITS



## 9800 SERIES HEAVY-DUTY POCKET DOOR FRAME KITS 9850HD for 2" x 4" Walls | 9852HD for 2" x 6" Walls

- For doors 1-3/8" - 1-3/4" thick, weighing up to 250 lbs.
- Pre-assembled header assembly goes up quickly
- Heavy-duty, V-groove jump proof aluminum track
- Real wood split studs, size 3/4" x 1-3/4" width relative to length, steel encased for rigidity and to prevent fastener penetration into the pocket

### Certifications

- Meets performance requirements ANSI/BHMA A156.14 (Grade 1) for sliding doors by exceeding 100,000 cycles in operation
- Type: D01311-250
- ADA Compliant

PART #	MAX DOOR WEIGHT	DOOR THICKNESS	DOOR WIDTH	DOOR HEIGHT	HANGER
9850HD-102	250 lbs (113 kg)	1-3/8" - 1-3/4" (35mm-44mm)	4'0" (1219mm)	8'6" (2743mm)	9806 Ball bearing
9850HD-96	250 lbs (113 kg)	1-3/8" - 1-3/4" (35mm-44mm)	4'0" (1219mm)	8'0" (2438mm)	9806 Ball bearing
9852HD-84	250 lbs (113 kg)	1-3/8" - 1-3/4" (35mm-44mm)	3'0" (914mm)	7'0" (2134mm)	9806 Ball bearing
9852HD-80	250 lbs (113 kg)	1-3/8" - 1-3/4" (35mm-44mm)	3'0" (914mm)	6'8" (2032mm)	9806 Ball bearing

---

## BI-FOLD SETS



### 9570CS (coming soon)

- Door weight up to 125 lbs per panel bi-fold
- Door thickness from 1-1/8" - 1-3/4"
- Track is extruded aluminum jump-proof style with "V" shaped rails
- Available in lengths: 48", 60", 72", & 96"

#### System Includes

- Aluminum track
- Parts bag (additional parts bag required for 4-door application)

#### Applications

- Commercial
- Healthcare
- Hospitality
- Office
- Residential

---

## BY-PASS PACKED SETS



### 9613RS Non-Fascia (coming soon)

- Door weight up to 60 lbs per door with single wheel hanger
- Door thickness 3/4" - 1-3/8"
- Track is extruded aluminum jump-proof style with integral
- Available in lengths: 48", 60", 72", & 96"

#### System Includes

- Aluminum track
- Four hangers
- Two pulls
- Parts bag (additional parts bag required for 3-door application)

#### Certifications

- Conforms to ANSI A156.14
- Type: D02411-75

#### Applications

- Commercial
- Healthcare
- Hospitality
- Office
- Residential

## BY-PASS PACKED SETS



### 9614RS Fascia (coming soon)

- Door weight up to 60 lbs per door with single wheel hanger
- Door thickness 3/4" - 1-3/8"
- Track is extruded aluminum jump-proof style with integral
- Grooved fascia
- Available in lengths: 48", 60", 72", & 96"

#### System Includes

- Aluminum track with fascia
- Four hangers
- Two pulls
- Parts bag (additional parts bag required for 3-door application)

#### Certifications

- Conforms to ANSI A156.14
- Type: D02411-75

#### Applications

- Commercial
- Healthcare
- Hospitality
- Office
- Residential



### 9611CS (coming soon)

- Door weight up to 150 lbs per door
- Door thickness up to 1-3/8" - 1-3/4"
- Quick release hangers allow for easy door hanging and removal
- Available in lengths: 48", 60", 72", 96", & 120"

#### System Includes

- Two aluminum tracks
- Four hangers
- One guide
- Two pulls
- Parts bag (additional parts bag required for 4-door application)

#### Certifications

- Conforms to ANSI A156.14
- Type: D02411-150

#### Applications

- Commercial
- Healthcare
- Hospitality
- Office
- Residential

## BY-PASS PACKED SETS



### 9611HD

- Door weight up to 250 lbs per door
- Door thickness up to 1-3/8" - 1-3/4"
- Quick release hangers allow for easy door hanging and removal
- Available in lengths: 48", 60", 72", 96", & 120"

#### System Includes

- Two aluminum tracks
- Four hangers
- One guide
- Two pulls
- Parts bag (additional parts bag required for 4-door application)

#### Certifications

- Conforms to ANSI A156.14
- Type: D02411-250

#### Applications

- Commercial
- Healthcare
- Hospitality
- Office
- Residential