

---

## ELECTRIC STRIKES



### 2925 GRADE 1 ELECTRIC STRIKE

- Ideal for high traffic installations
- Field selectable Fail Safe - Fail Secure (fail safe not permitted on fire-rated doors)
- Field selectable voltage, 12/24 VDC
- Non-handed, reversible



### 2928 GRADE 2 MULTI-APPLICATION ELECTRIC STRIKE

- Field selectable Fail Safe - Fail Secure (fail safe not permitted on fire-rated doors)
- Field selectable voltage, 12/24V VDC
- Non-handed, reversible



### 2930 GRADE 1 UNIVERSAL APPLICATION ELECTRIC STRIKE

- Designed for installation in hollow metal frames with Grade 1 cylindrical and mortise locksets
- Field selectable Fail Safe - Fail Secure (fail safe not permitted on fire-rated doors)
- Field selectable voltage, 12/24 VDC
- Non-handed, reversible

## MAGNETIC LOCKS



### 2940 SERIES MAGNETIC LOCK

- 600 lb and 1200 lb holding force options
- Field selectable voltage, 12/24 VDC
- ANSI/BHMA A156.23 Grade 1 compliant



### 2950 SERIES MAGNETIC LOCK

- 1200 lb and 1650 lb holding force options
- Adaptable to virtually any application utilizing top jamb or glass door mounting kits
- Voltage sensing, 12/24 VDC
- ANSI/BHMA A156.23 Grade 1 compliant

---

## DELAYED EGRESS



### 2958 INTEGRATED DELAYED EGRESS LOCK

- Intended for single doors with latching or non-latching hardware
- Field selectable 15 or 30 second exit delay
- Door Position Status, Magnetic Bond Sensor, and Anti-Tamper Switch Options
- May be adjusted both vertically and laterally to compensate for wide door gaps and warped or misaligned doors



### 4500 SERIES AND 4600 SERIES DELAYED EGRESS WITH WALL MOUNT CONTROLLER

- Used in retail, commercial, hospitals, and assisted living facilities to promote safety and security
- Used on exit doors when unauthorized egress is initiated when the locked mode and unlocks after 15 seconds, permitting egress
- Optional photoluminescent push bar cover available



### 4500 SERIES INTEGRATED DELAYED EGRESS

- Provides patient safety, patron safety, and loss prevention measures in a variety of applications
- When unauthorized egress is initiated, egress is delayed through the door for 15 seconds (or 30 seconds) by the approved locking hardware
- Optional photoluminescent push bar cover available

## LOW ENERGY POWER OPERATORS



### 8300 SERIES STANDARD LOW ENERGY OPERATOR

- For use on fire-rated and non-fire rated openings
- One person installation
- Single, simultaneous/independent pair, and double egress simultaneous pair models



### 8400 SERIES PREMIUM LOW ENERGY OPERATOR

- For use on fire-rated and non-fire-rated openings
- On-Board LCD display for advanced programming and diagnostics
- Single, simultaneous pair, independent pair, double egress simultaneous pair, and single operator with 5100 mechanical closer models

#### Operator Accessories

- Round and square actuator options with logo, text, wireless and touchless options
- Mounting solutions
- Wireless communication and relays

## ACTUATORS

Hager offers a variety of actuators that are both hard-wired and wireless. Offered with 304 grade stainless steel finish that is scratch resistant, graphics are embossed onto the faceplate for durability.



2-659-0303



2-659-0357



2-659-0175



2-659-0178

---

# EXIT DEVICE AND TRIM ELECTRIC MODIFICATIONS



## 4500 SERIES MODIFICATIONS FOR RIM, MORTISE, SVR AND CVR MODELS

### Rim

- ED - Electric Dogging
- RX - Request to Exit
- RX2 - Dual Request to Exit
- EDRX - Electric Dogging with Request to Exit
- ALK - Alarm Kit
- AI - Authorized Ingress
- LM - Latchbolt Monitor
- RXLM - Request to Exit with Latchbolt Monitor
- MLR - Motor Driven Electric Latch Retraction
- MLRX- Motor Driven Electric Latch Retraction with Request to Exit
- MLRXLM - Motor Driven Electric Latch Retraction with Request to Exit and Latchbolt Monitoring
- MLRLM - Motor Driven Electric Latch Retraction with Latchbolt Monitoring
- DE - Delayed Egress
- OBDE - Onboard Delayed Egress

### Surface Mount Vertical Rod

- ED - Electric Dogging
- RX - Request to Exit
- RX2 - Dual Request to Exit
- EDRX - Electric Dogging with Request to Exit
- ALK - Alarm Kit
- AI - Authorized Ingress
- LM - Latchbolt Monitor
- RXLM - Request to Exit with Latchbolt Monitor
- MLR - Motor Driven Electric Latch Retraction
- MLRX- Motor Driven Electric Latch Retraction with Request to Exit MLRXLM - Motor Driven Electric Latch Retraction with Request to Exit and Latchbolt Monitoring
- MLRLM - Motor Driven Electric Latch Retraction with Latchbolt Monitoring DE - Delayed Egress (Rod covers by others recommended for SVR/LBR Applications)
- OBDE - Onboard Delayed Egress (Rod covers by others recommended for SVR/LBR Applications)



## 4500 SERIES MODIFICATIONS FOR RIM, MORTISE, SVR AND CVR MODELS

### Mortise

- ED - Electric Dogging
- RX - Request to Exit
- RX2 - Dual Request to Exit
- EDRX - Electric Dogging with Request to Exit
- EU/EL - Electrically unlocked / Electrically locked
- ALK - Alarm Kit
- MLR - Motor Driven Electric Latch Retraction
- MLRX- Motor Driven Electric Latch Retraction with Request to Exit DE - Delayed Egress
- OBDE - Onboard Delayed Egress

### Concealed Vertical Rod

- ED - Electric Dogging
- RX - Request to Exit
- RX2 - Dual Request to Exit
- EDRX - Electric Dogging with Request to Exit
- ALK - Alarm Kit
- AI - Authorized Ingress
- LM - Latchbolt Monitor
- RXLM - Request to Exit with Latchbolt Monitor
- MLR - Motor Driven Electric Latch Retraction
- MLRX- Motor Driven Electric Latch Retraction with Request to Exit MLRXLM - Motor Driven Electric Latch Retraction with Request to Exit and Latchbolt Monitoring
- MLRLM - Motor Driven Electric Latch Retraction with Latchbolt Monitoring DE - Delayed Egress
- OBDE - Onboard Delayed Egress

### 4500 Trim Modifications

- Heavy Duty Commercial





## 4600 SERIES MODIFICATIONS FOR RIM AND CVR MODELS

### Narrow Style Rim

- ED - Electric Dogging
- RX - Request to Exit
- RX2 - Dual Request to Exit
- EDRX - Electric Dogging with Request to Exit
- ALK - Alarm Kit
- LM - Latchbolt Monitor
- RXLM - Request to Exit with Latchbolt Monitor
- MLR - Motor Driven Electric Latch Retraction
- MLRX- Motor Driven Electric Latch Retraction with Request to Exit MLRXLM - Motor Driven Electric Latch Retraction with Request to Exit and Latchbolt Monitoring
- MLRLM - Motor Driven Electric Latch Retraction with Latchbolt Monitoring DE - Delayed Egress

### Concealed Vertical Rod

- ED - Electric Dogging
- RX - Request to Exit
- RX2 - Dual Request to Exit
- EDRX - Electric Dogging with Request to Exit
- MLR - Motor Driven Electric Latch Retraction
- MLRX- Motor Driven Electric Latch Retraction with Request to Exit DE - Delayed Egress

# LOCK ELECTRIC MODIFICATIONS



## 3480 CYLINDRICAL GRADE 1 ELECTRIFIED STOREROOM

- Extra Heavy Duty Commercial, Industrial, Institution
- Non-handed
- Conventional Cylinder, Small Format Interchangeable Core and Large Format Interchangeable Core option available.
- 2-3/4" (70mm) backset standard
- 1-1/8" x 2-1/4" (29mm x 57mm) square corner faceplate standard
- ASA strike supplied standard.



Archer



August



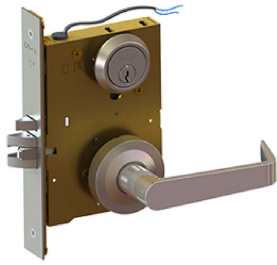
Withnell



### Electrified Options

- 3480EL - Storeroom, Fail Safe
- 3480EU - Storeroom, Fail Secure
- 3480RX - Storeroom, Request to Exit
- 3480ELRX - Storeroom, Fail Safe with Request to Exit
- 3480EURX - Storeroom, Fail Secure with Request to Exit





## 3800 SERIES GRADE 1 - MORTISE

- Heavy duty commercial, industrial, institutional
- Field reversible
- Concealed thru-bolts
- Conventional mortise cylinder, Small Format Interchangeable Core housing, or Large Format Interchangeable Core housing available.
- Requires mortise cylinder with Schlage L cam
- 2-3/4" (70mm) backset only
- ASA strike supplied standard



Archer



August



Charles



Johnston



Joshua



Louis



Warren



William



Withnell



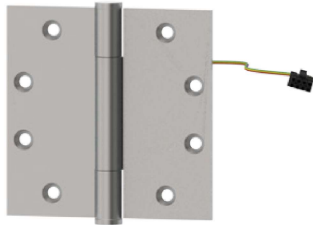
### Electrified Options

- 3880EL - Storeroom, Fail Safe
- 3880EU - Storeroom, Fail Secure
- 3882EL - Institution, Fail Safe
- 3882EU - Institution, Fail Secure
- RX - Request to Exit\*
- LM - Latchbolt Monitor Door
- DPM - Position Monitor

\*Available on 3810, 3850, 3870, 3880, or in combination with 3880EL/3880EU.

## ELECTRIFIED HINGES - COMMERCIAL

The following options are available on architectural-grade ball bearing and anti-friction bearing hinges. They are available in steel, brass, or stainless materials. Other options are available.



### EMN

- Monitor only
- 3- Knuckle or 5-Knuckle

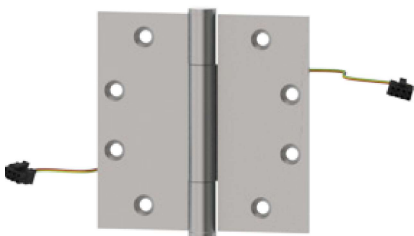


### ETW

- Through-Wire Only
- 2-Knuckle. 3-Knuckle or 5-Knuckle

#### ETW Options

- 2, 4, 6, 8, 10, 12 wire available
- 18, 22, 28 gauge wires available



### ETM

- Through-Wire with Monitoring
- 3-Knuckle or 5-Knuckle
- Quick Connect available (specify when ordering).
- Quick Connect wire harness available up to 15 feet.



# ROTON® CONTINUOUS GEARED HINGES ELECTRIFIED



## EIS

- Exposed Electric Switches
- Available on: 780-110HD, 780-111, 780-111HD, 780-111LL, 780-112HD, 780-112LL, 780-124HD, 780-224, 780-224HD, 780-224LL, 780-226HD, 780-226LL



## ETM

- Electric Power Transfer
- Available on: 780-111, 780-111HD, 780-111LL, 780-112, 780-112HD, 780-112LL, 780-124HD, 780-124LL, 780-224, 780-224HD, 780-224LL, 780-226HD, 780-226LL



## EMN

- Concealed Electric Monitoring
- Available on: 780-111, 780-111HD, 780-111LL, 780-112, 780-112HD, 780-124HD, 780-124LL, 780-224, 780-224HD, 780-224LL, 780-226HD, 780-226LL



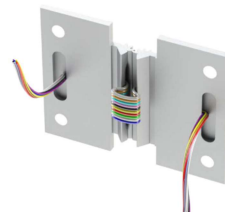
## EPT

- Electric Power Transfer
- Available on: 780-045HD, 780-046HD, 780-053, 780-053HD, 780-054HD, 780-111, 780-111HD, 780-111LL, 780-112, 780-112HD, 780-112LL, 780-124HD, 780-124LL, 780-224, 780-224HD, 780-224LL, 780-226HD, 780-226LL, 1200-600, 1200-650



## ETW

- Concealed Electric Through-Wire
- Available on: 780-057, 780-111, 780-111HD, 780-111LL, 780-112, 780-112HD, 780-112LL, 780-124HD, 780-124LL, 780-157, 780-224, 780-224HD, 780-224LL, 780-226HD, 780-226LL, 780-235HD, 1200-600, 1200-650



## RETW

- Removable Electric Through-Wire
- Available on: 780-057, 780-111HD, 780-112HD, 780-124HD, 780-157, 780-224HD, 780-226HD

## STAINLESS STEEL CONTINUOUS HINGES ELECTRIFIED



### EIS

- Exposed Electric Switches
- Available on: 790-900, 790-915



### EPT

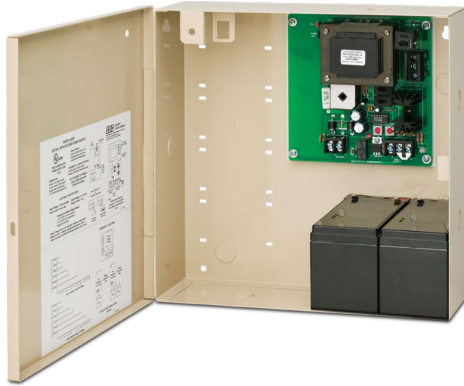
- Electric Power Transfer
- Available on: 780-900, 790-915, 790-903, 790-904



### ETW

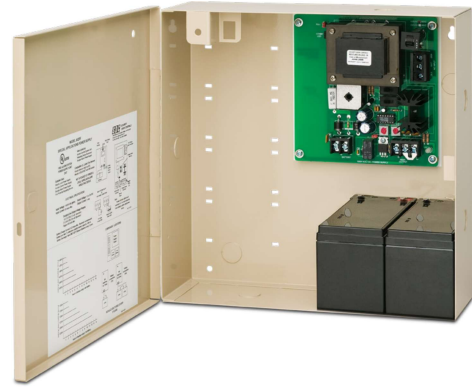
- Concealed Electric Through-Wire Available on: 790-900, 790-915

# POWER SUPPLIES



## 2908 1A MODULAR POWER SUPPLY

- Provides up to 1amp of 12/24 VDC power for all electrified products



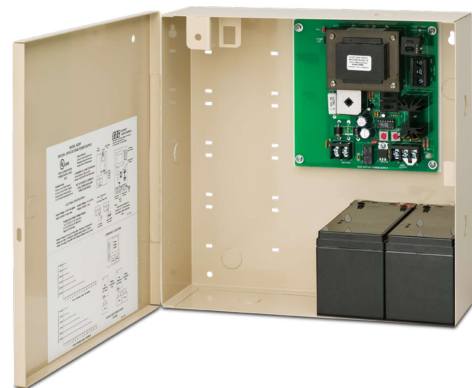
## 2909 2A MODULAR POWER SUPPLY

- Provides up to 1amp of 12/24 VDC power for all electrified products



## 2910 4A MODULAR POWER SUPPLY

- Provides up to 4amps of 12/24 VDC power for all electrified products



## 2911 6A MODULAR POWER SUPPLY

- Provides up to 6amps of 12/24 VDC power for all electrified products

## POWER TRANSFER

Heavy duty electric power transfer units provide a concealed and secure means of transferring electric lock and exit device power and signal wires from the frame to the door. When the door is closed, the power transfer unit is completely concealed. They are ideal for heavy traffic and applications requiring higher security to inhibit tampering and abuse.



### 2-679-0621

- 2 conductor (18 ga.)
- Aluminum powder coat

### 2-679-0623

- 10 conductor (24 ga.)
- Aluminum powder coat

### 2-679-0622

- 2 conductor (18 ga.)
- Dark brown powder coat

### 2-679-0624

- 10 conductor (24 ga.)
- Dark brown powder coat



### 2-679-0620

- Concealed Mortise Mount Power Transfer Loop
- Frame mortised steel dust box with flexible steel loop